

Department of Medical and Mental Health

July 2021 - June 2022

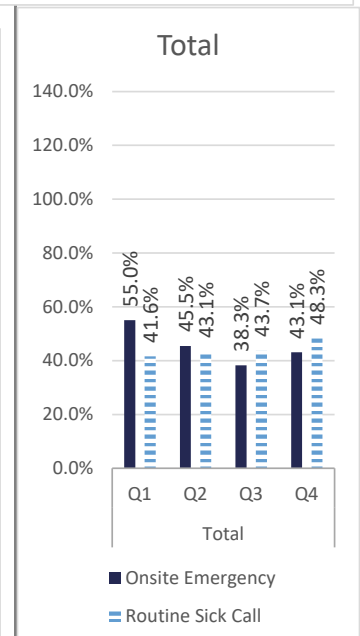
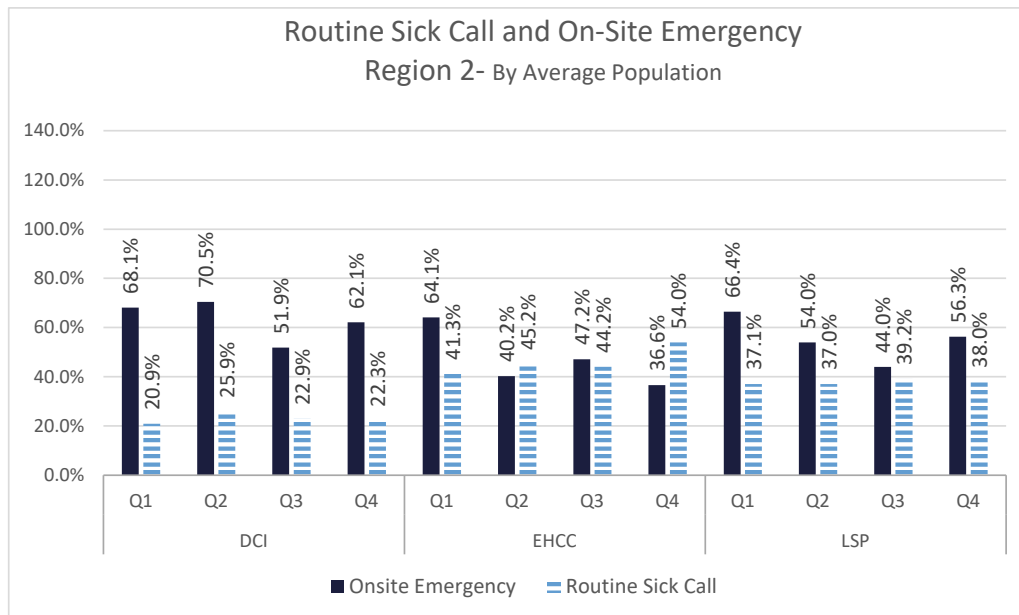
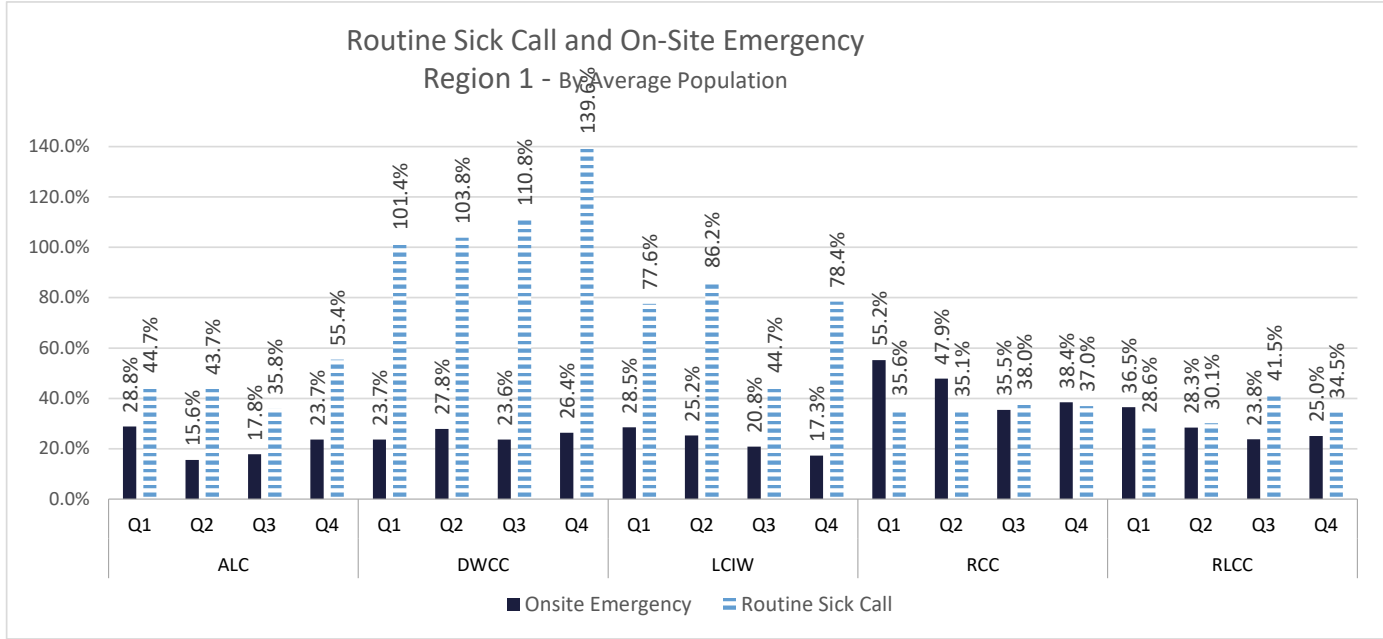
Q1 (July-Sept. 2021)

Q2 (Oct.- Dec.2021)

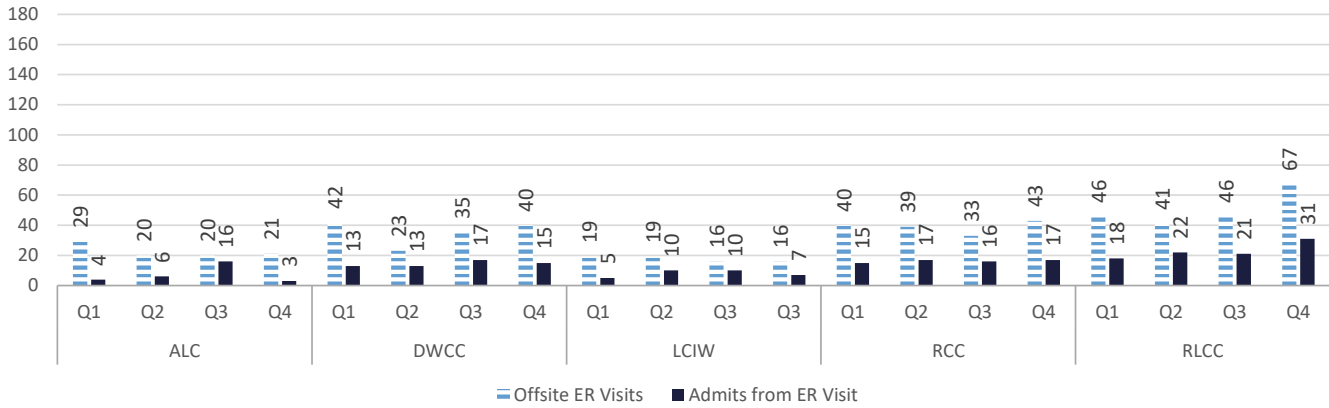
Q3 (Jan.-March 2022)

Q4 (April-June 2022)

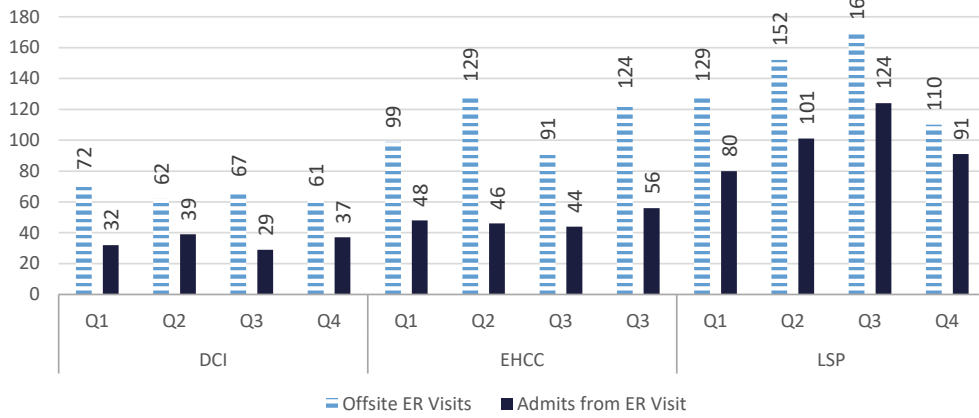
Healthcare Basic Report I



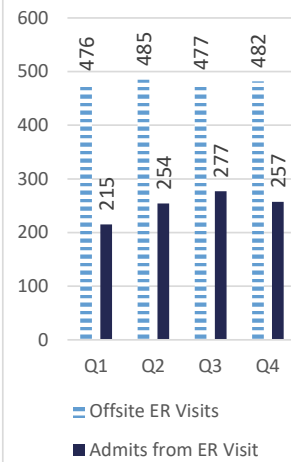
Emergency Off-Site Hospital Region 1



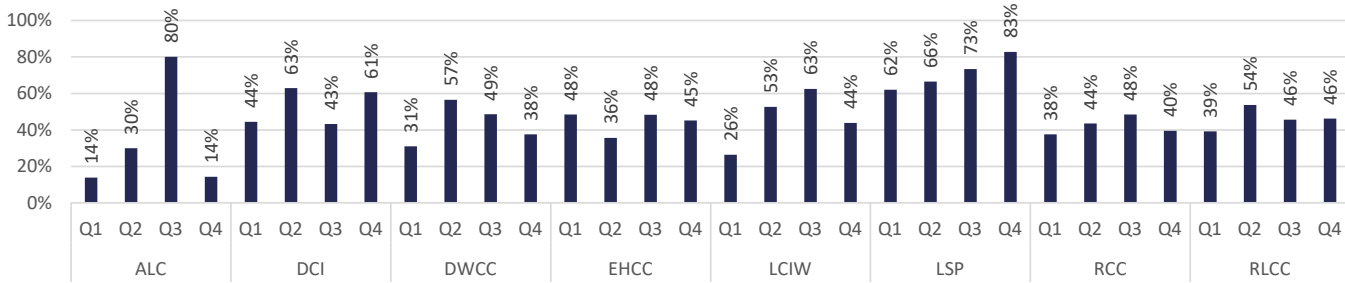
Emergency Off-Site Hospital Region 2



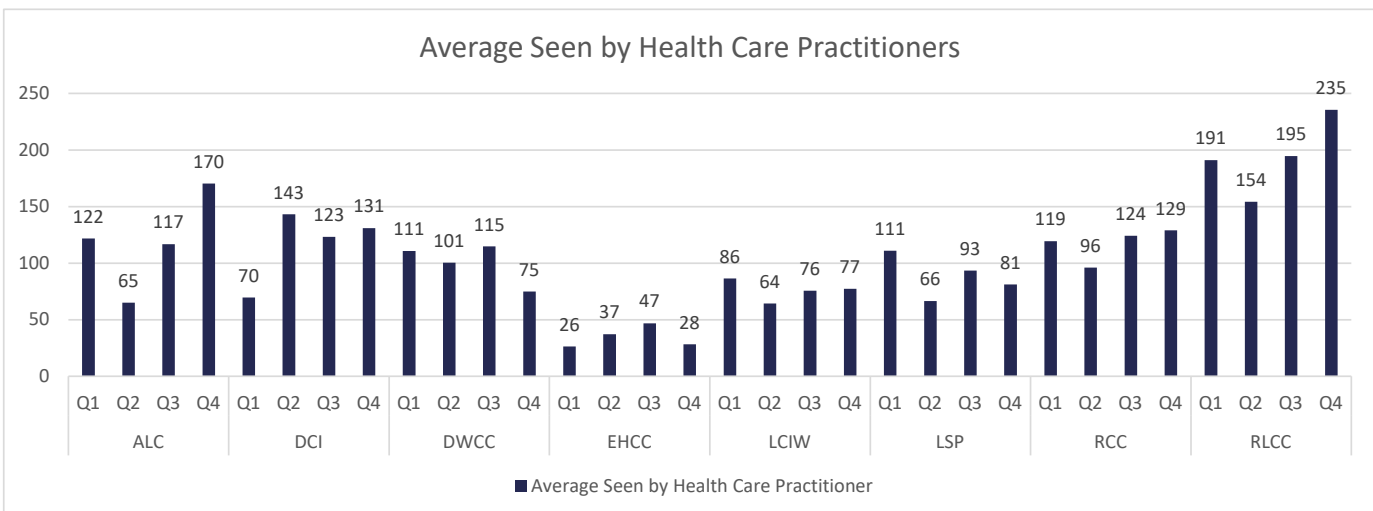
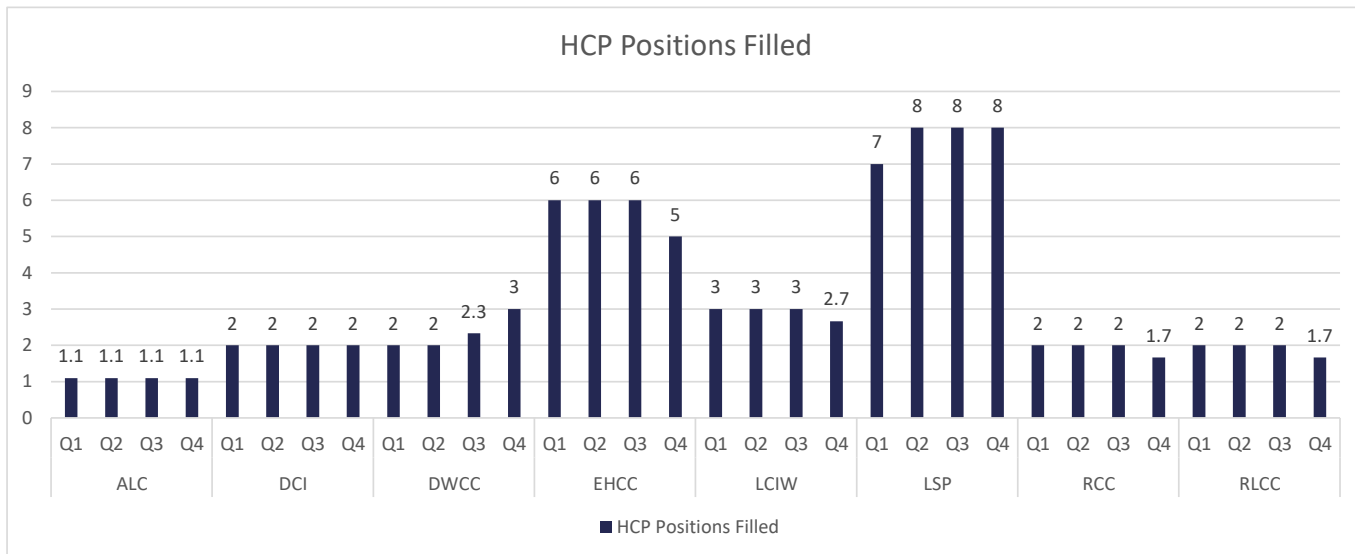
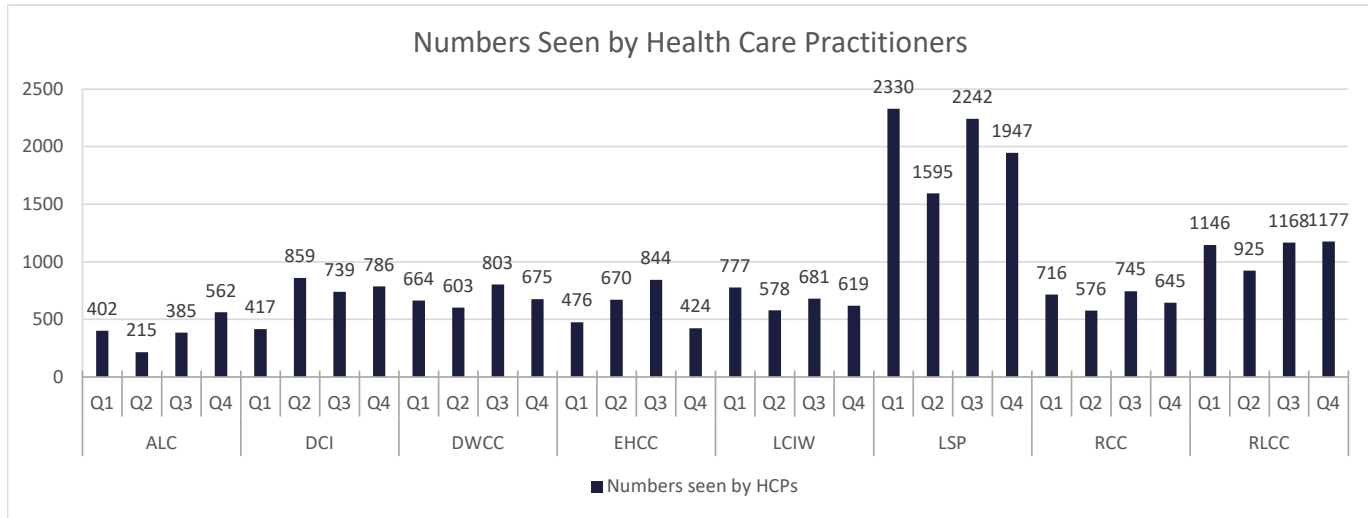
Total



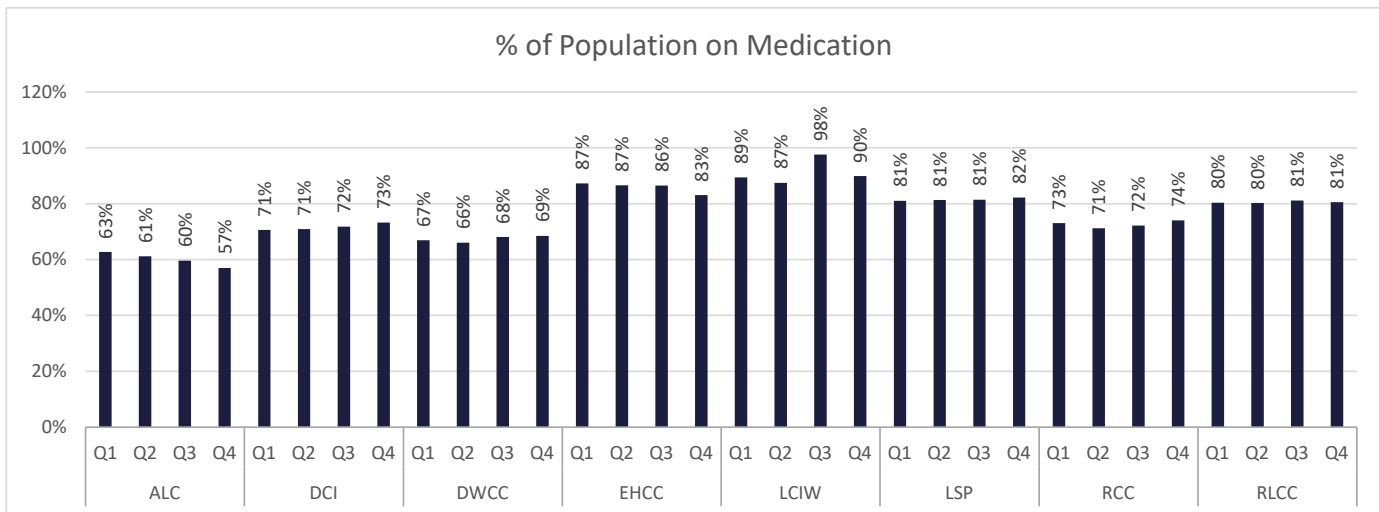
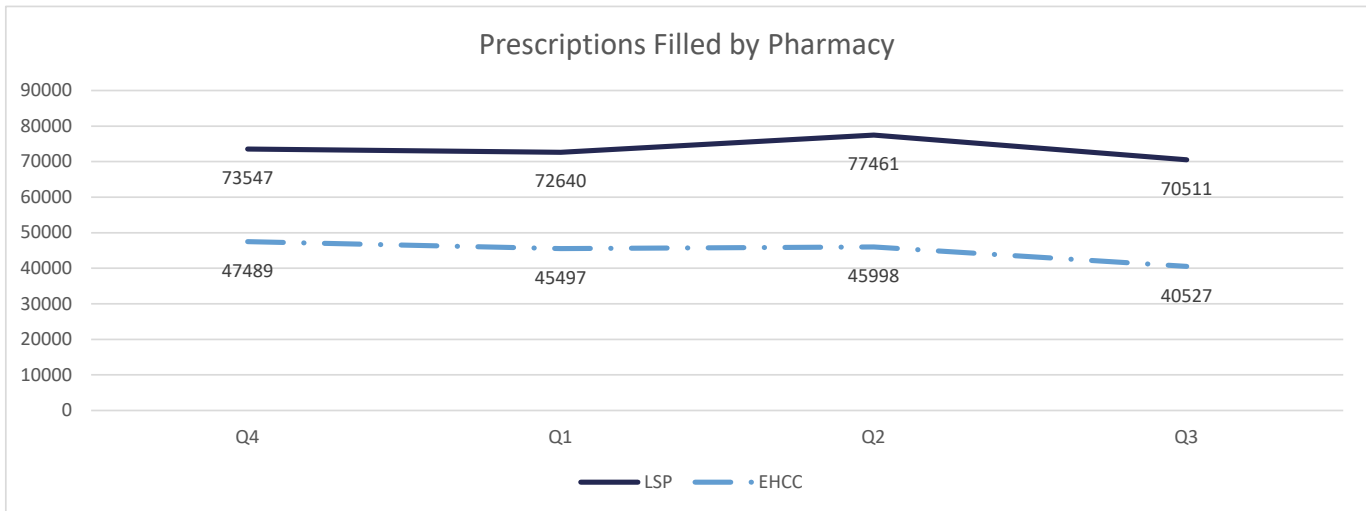
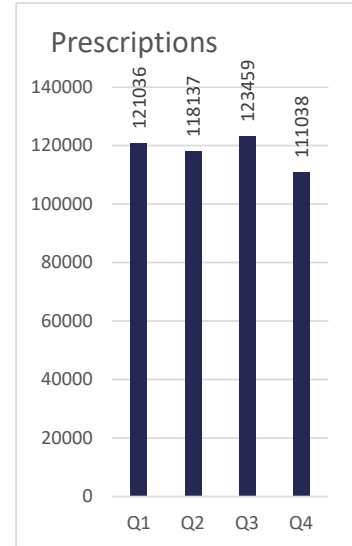
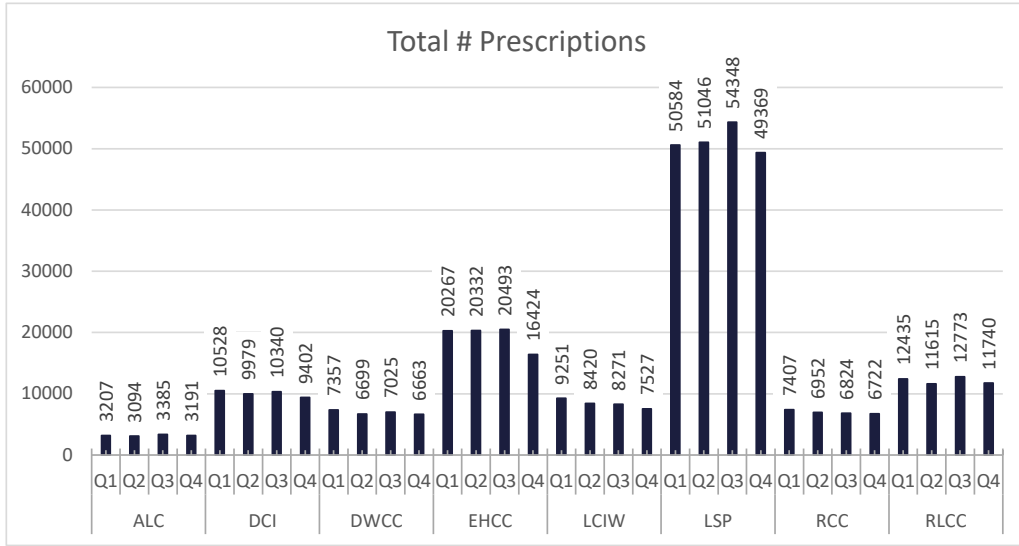
Admits from ER Visit By Offsite ER Visits



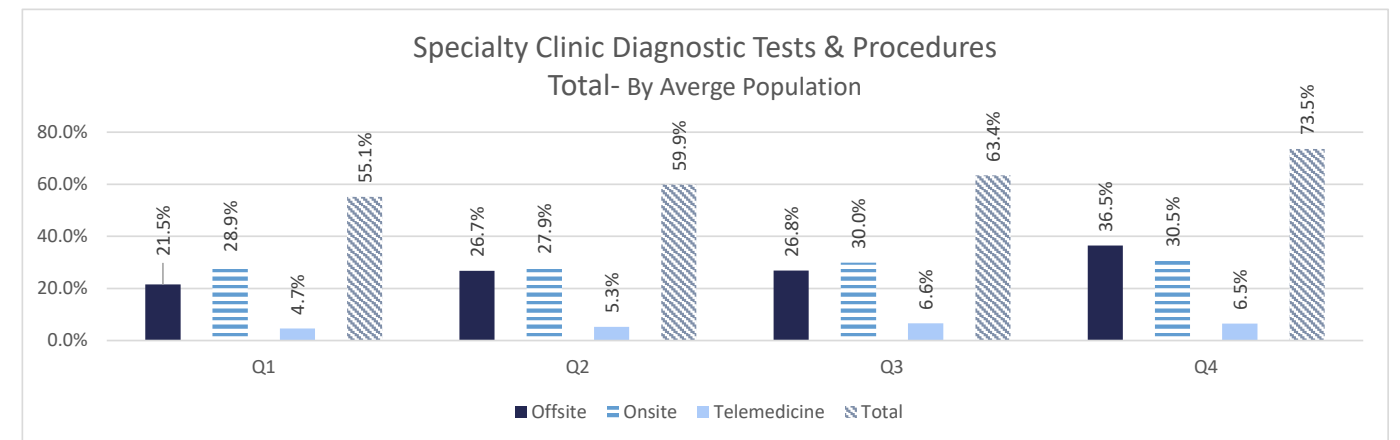
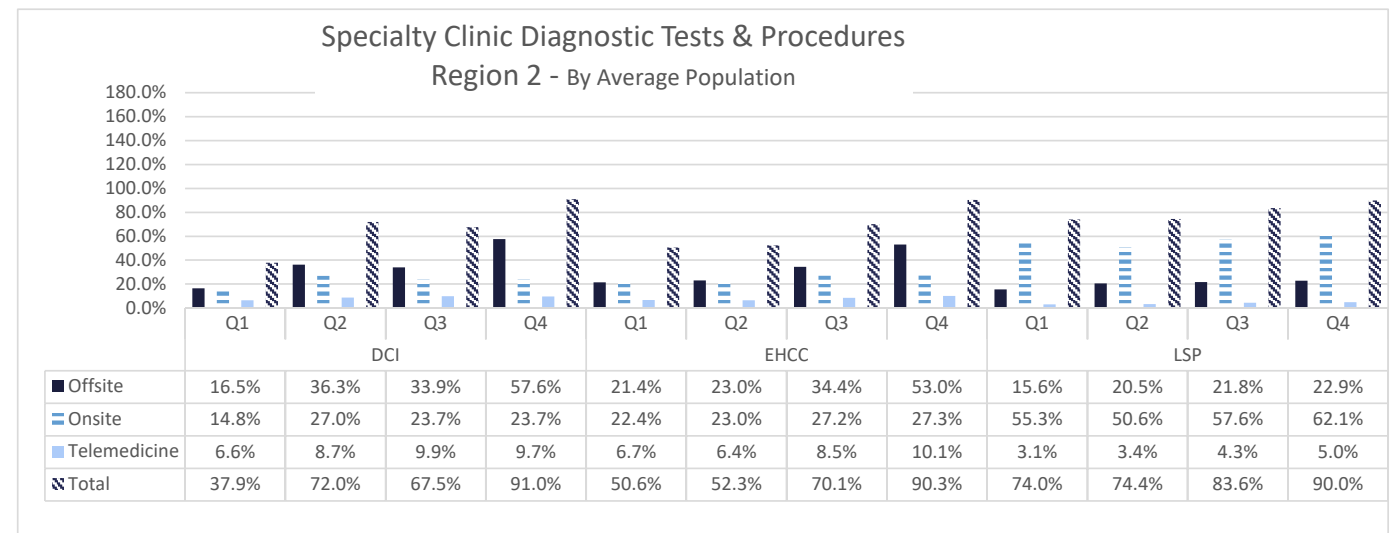
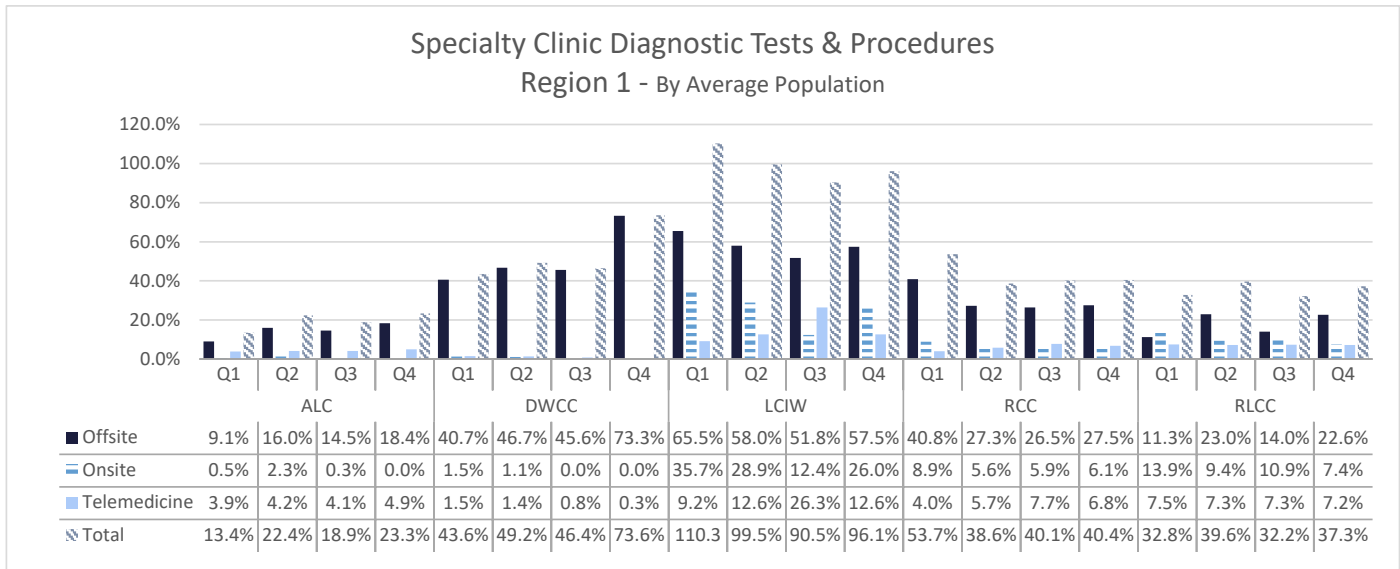
Healthcare Basic Report I



Healthcare Basic Report II

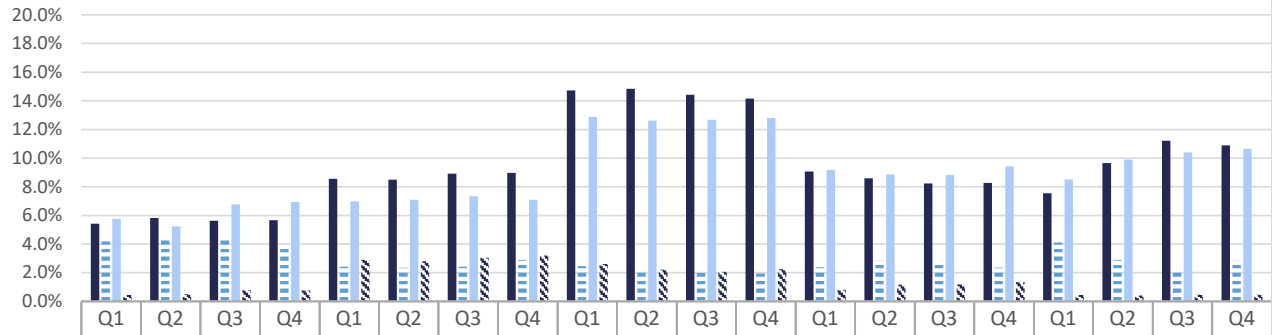


Specialty Clinic Diagnostic Tests & Procedures



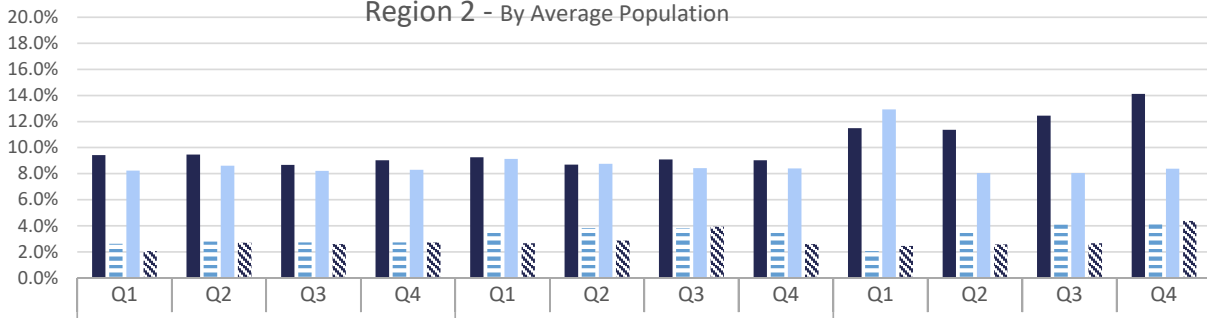
Chronic Disease

Chronic Disease
Region 1 - By Average Population



| | Q1 | Q2 | Q3 | Q4 | Q1 | Q2 | Q3 | Q4 | Q1 | Q2 | Q3 | Q4 | Q1 | Q2 | Q3 | Q4 | Q1 | Q2 | Q3 | Q4 |
|-----------------|------|------|------|------|------|------|------|------|-------|-------|-------|-------|------|------|------|------|------|------|-------|-------|
| | ALC | | | | DWCC | | | | LCIW | | | | RCC | | | | RLCC | | | |
| ■ Diabetes | 5.4% | 5.8% | 5.6% | 5.7% | 8.6% | 8.5% | 8.9% | 9.0% | 14.7% | 14.8% | 14.4% | 14.1% | 9.1% | 8.6% | 8.2% | 8.3% | 7.5% | 9.7% | 11.2% | 10.9% |
| ■ Heart Disease | 4.2% | 4.5% | 4.3% | 3.8% | 2.4% | 2.3% | 2.4% | 2.9% | 2.5% | 2.1% | 2.0% | 1.9% | 2.4% | 2.8% | 2.5% | 2.4% | 4.1% | 2.9% | 2.2% | 2.8% |
| ■ COPD | 5.8% | 5.2% | 6.8% | 6.9% | 7.0% | 7.1% | 7.3% | 7.1% | 12.9% | 12.6% | 12.7% | 12.8% | 9.2% | 8.9% | 8.8% | 9.4% | 8.5% | 9.9% | 10.4% | 10.6% |
| ▨ Cancer | 0.5% | 0.5% | 0.8% | 0.8% | 2.9% | 2.8% | 3.0% | 3.2% | 2.6% | 2.2% | 2.1% | 2.2% | 0.8% | 1.2% | 1.2% | 1.3% | 0.5% | 0.4% | 0.5% | 0.5% |

Chronic Disease
Region 2 - By Average Population



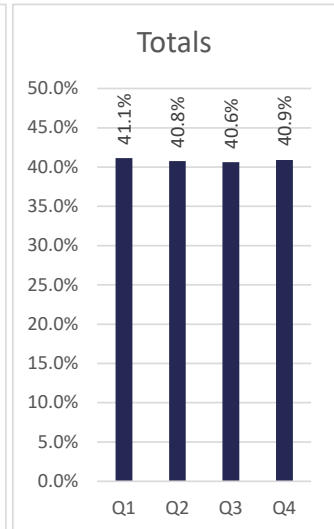
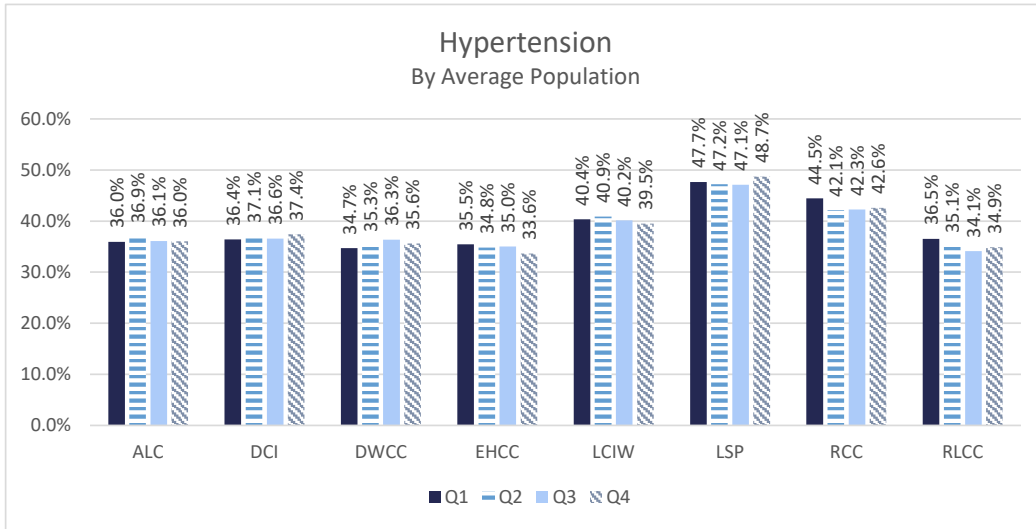
| | Q1 | Q2 | Q3 | Q4 | Q1 | Q2 | Q3 | Q4 | Q1 | Q2 | Q3 | Q4 |
|-----------------|------|------|------|------|------|------|------|------|-------|-------|-------|-------|
| | DCI | | | | EHCC | | | | LSP | | | |
| ■ Diabetes | 9.4% | 9.5% | 8.7% | 9.0% | 9.3% | 8.7% | 9.1% | 9.0% | 11.5% | 11.4% | 12.5% | 14.1% |
| ■ Heart Disease | 2.6% | 2.8% | 2.7% | 2.7% | 3.7% | 3.8% | 3.8% | 3.7% | 2.1% | 3.6% | 4.1% | 4.3% |
| ■ COPD | 8.2% | 8.6% | 8.2% | 8.3% | 9.1% | 8.8% | 8.4% | 8.4% | 12.9% | 8.0% | 8.0% | 8.4% |
| ▨ Cancer | 2.1% | 2.7% | 2.6% | 2.7% | 2.7% | 2.9% | 3.9% | 2.6% | 2.4% | 2.6% | 2.7% | 4.4% |

Chronic Disease
Total - By Average Population

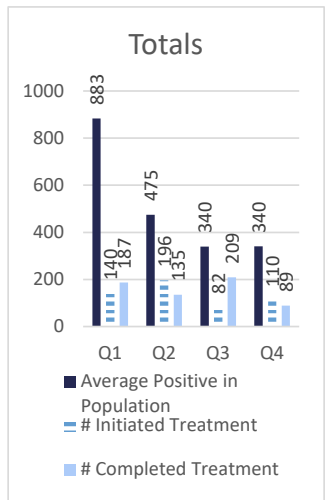
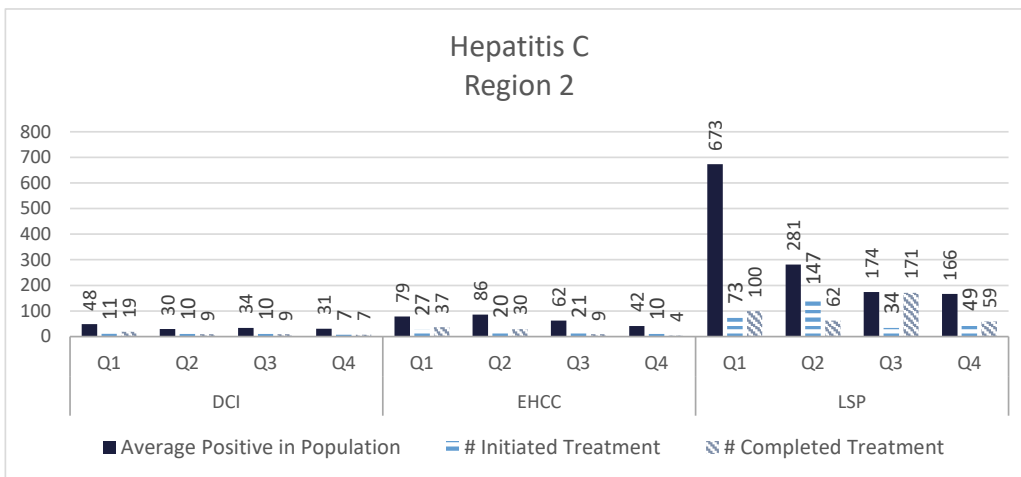
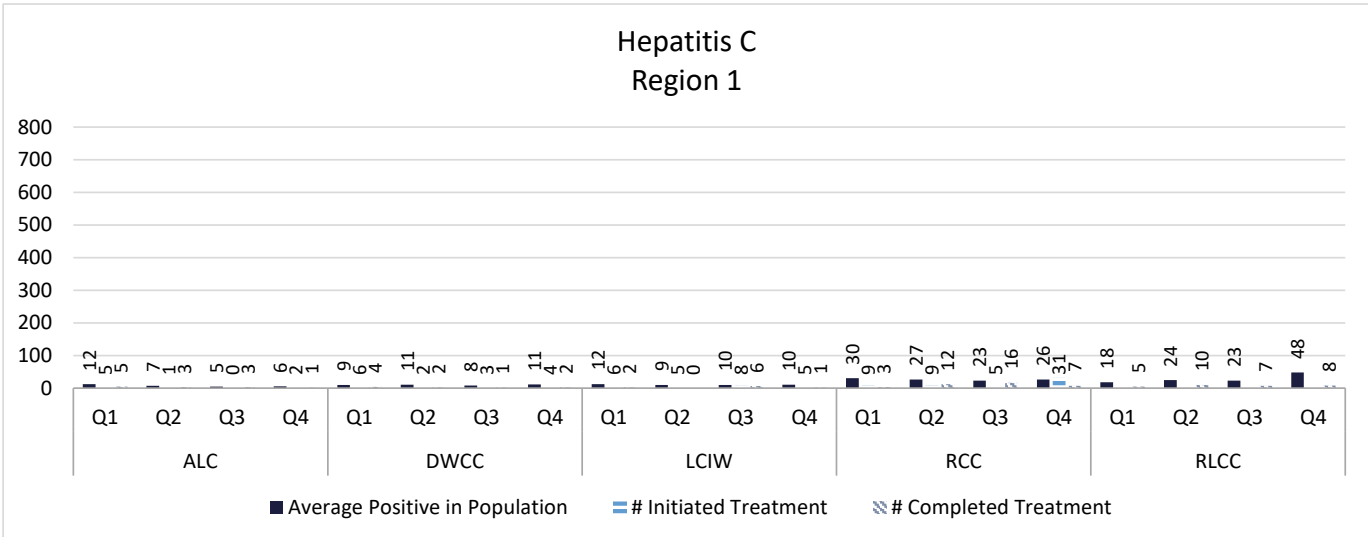


| | Q1 | Q2 | Q3 | Q4 |
|-----------------|-------|------|-------|-------|
| | Total | | | |
| ■ Diabetes | 9.8% | 9.9% | 10.4% | 10.9% |
| ■ Heart Disease | 2.8% | 3.3% | 3.4% | 3.4% |
| ■ COPD | 10.1% | 8.4% | 8.5% | 8.7% |
| ▨ Cancer | 2.0% | 2.1% | 2.3% | 2.8% |

■ Diabetes ■ Heart Disease ■ COPD ▨ Cancer



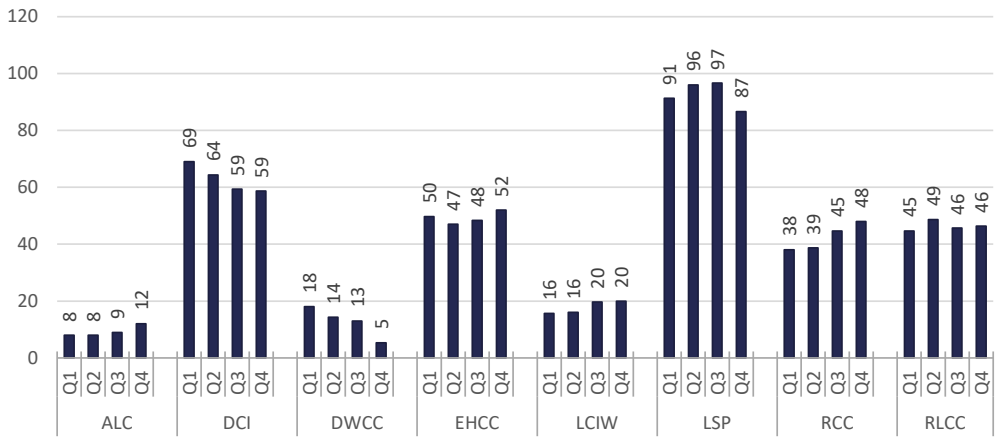
Communicable Disease



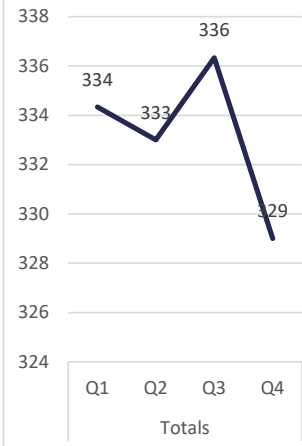
** Numbers represent averages

***Began reporting completed treatment July 2019

Average Positive HIV in Population

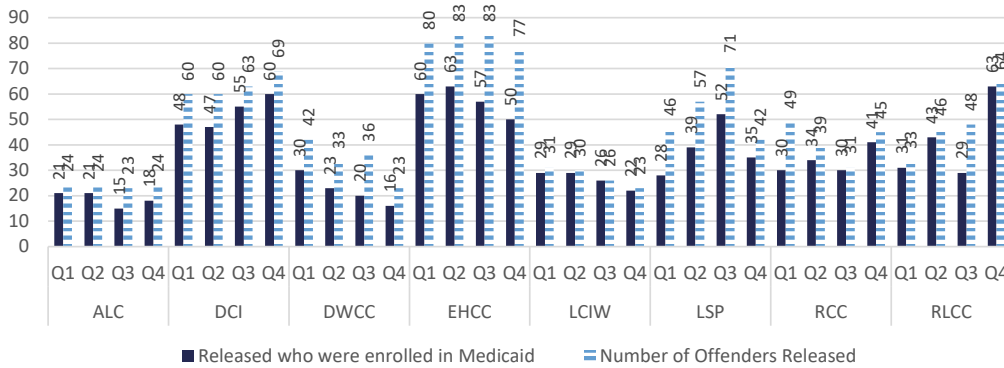


Totals

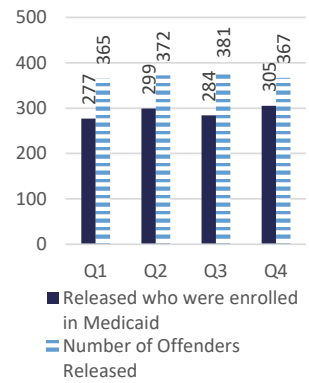


Medicaid Enrollment

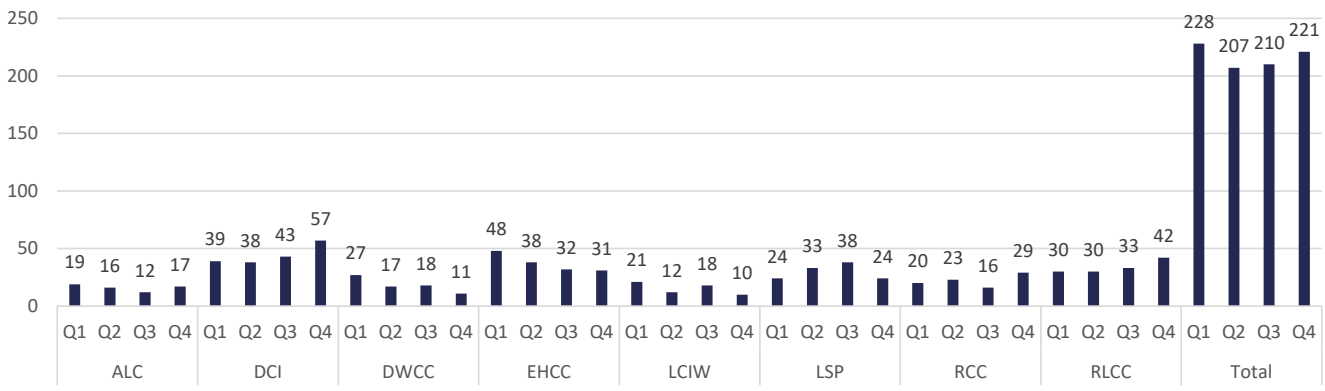
Number of Offenders Released who were enrolled in Medicaid



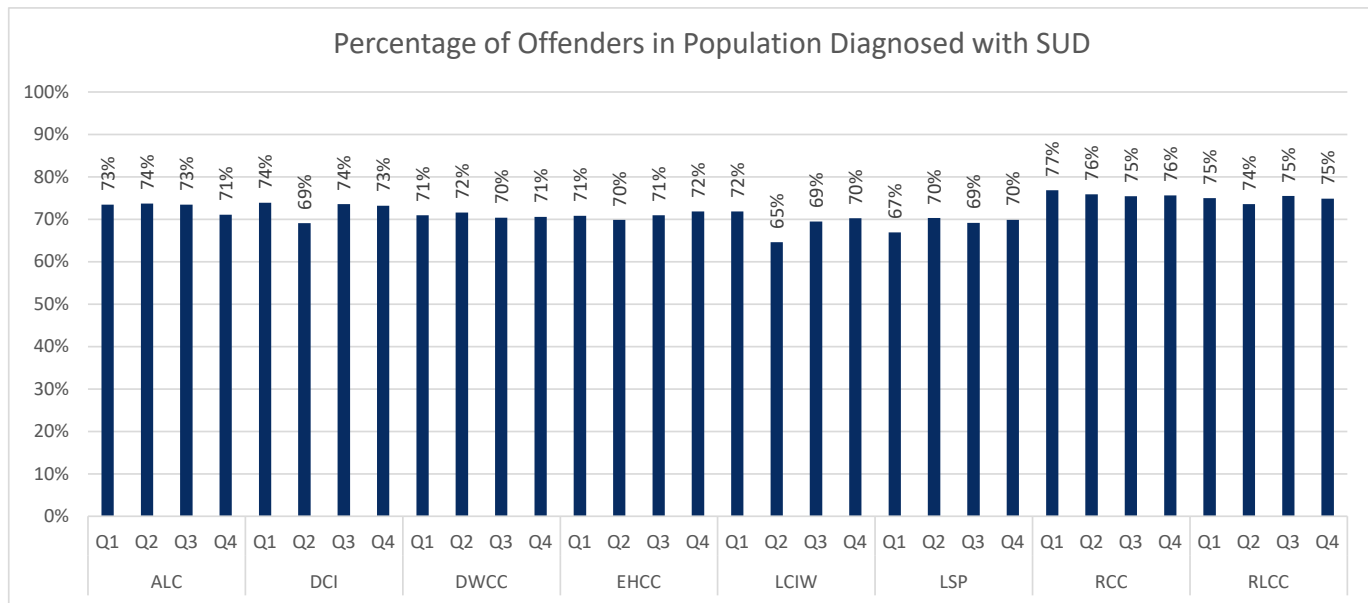
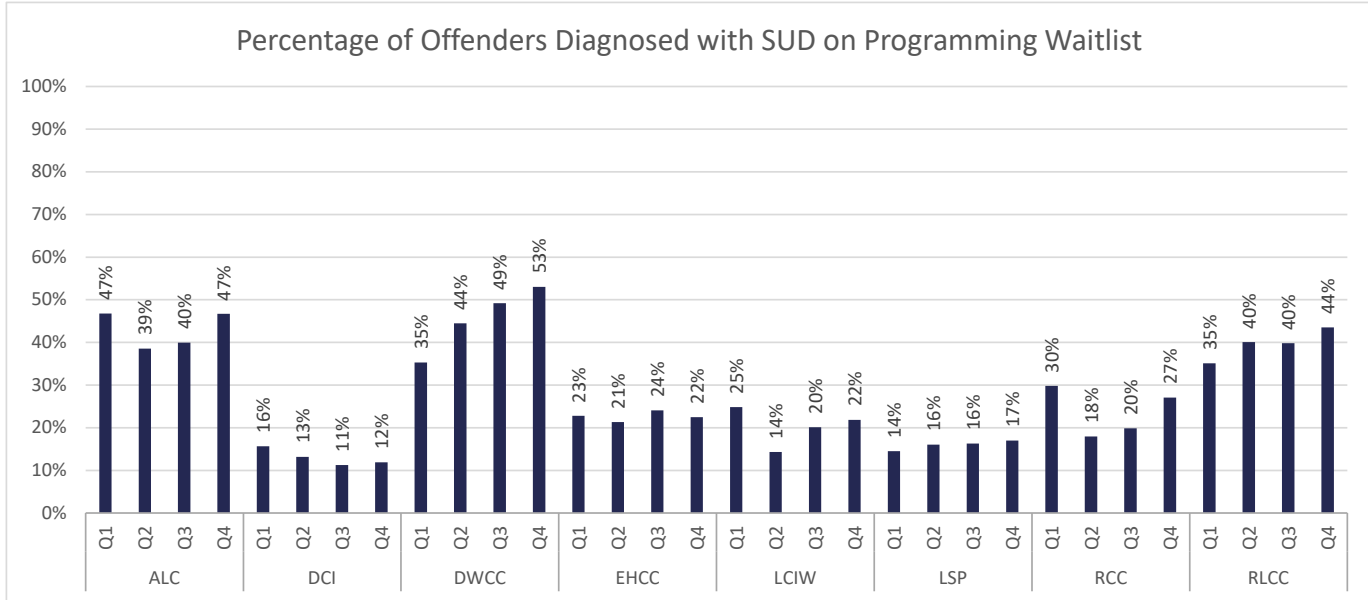
Totals



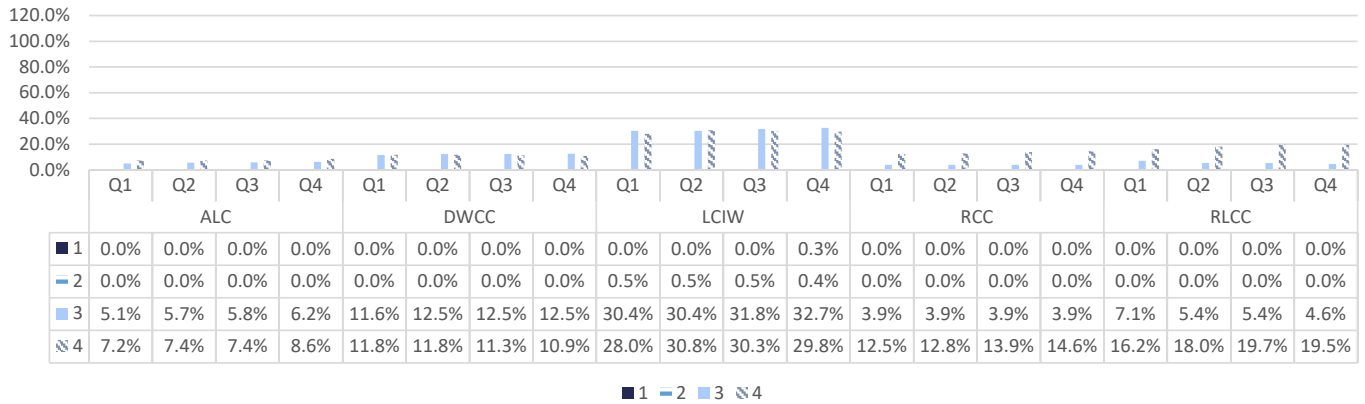
Number of Offenders released with a Health Plan card in hand at the time of release



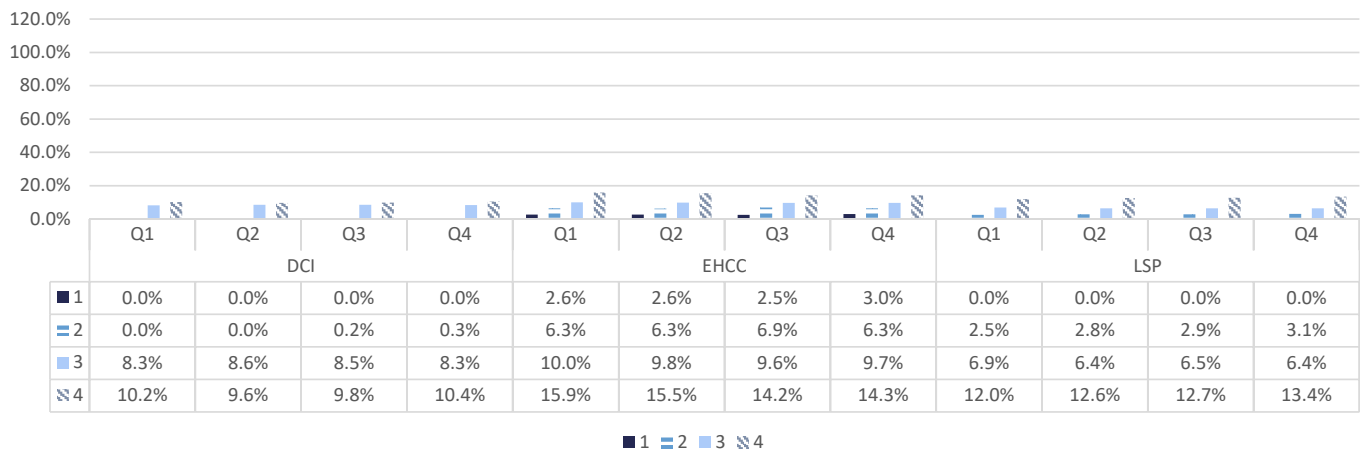
Behavioral Health



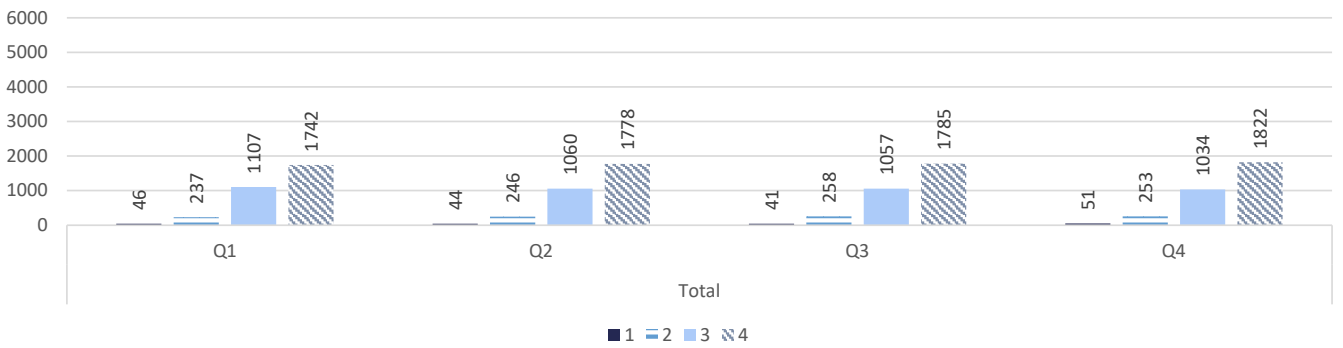
Mental Health Level of Care Region 1 - By Average Population



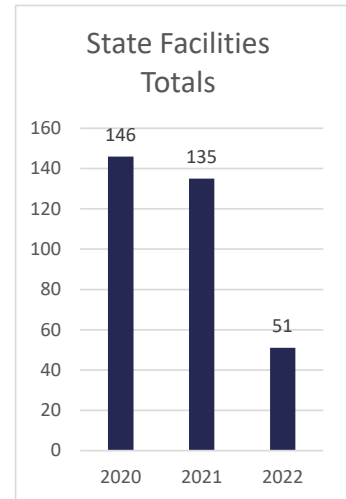
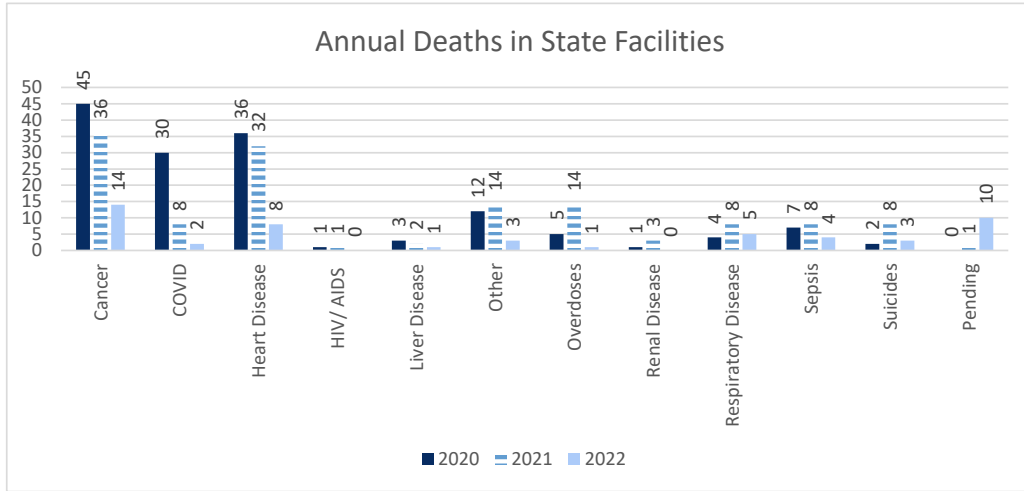
Mental Health Level of Care Region 2 - By Average Population



Mental Health Level of Care



Deaths



* 2021 is not a full year.

