

Department of Medical and Mental Health

July 2021 - June 2022

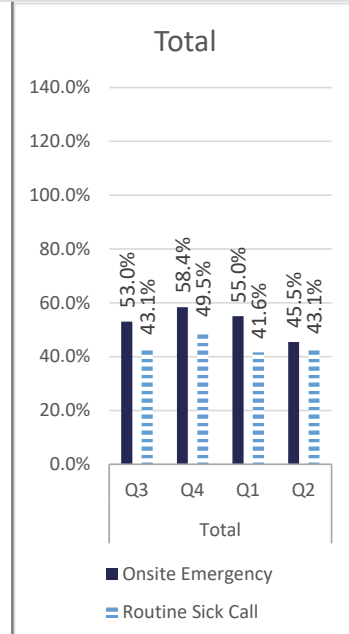
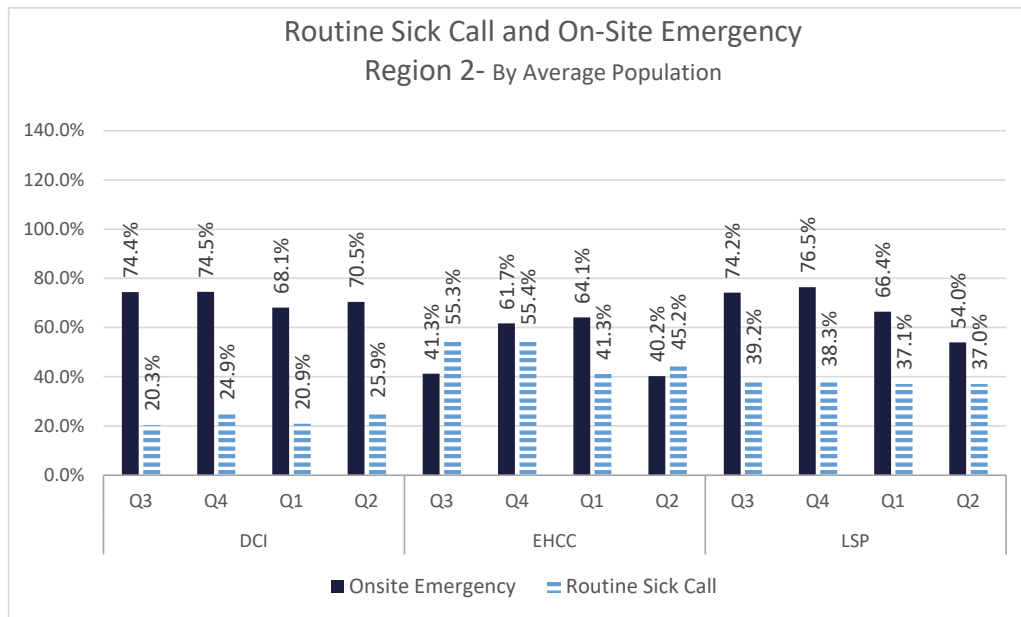
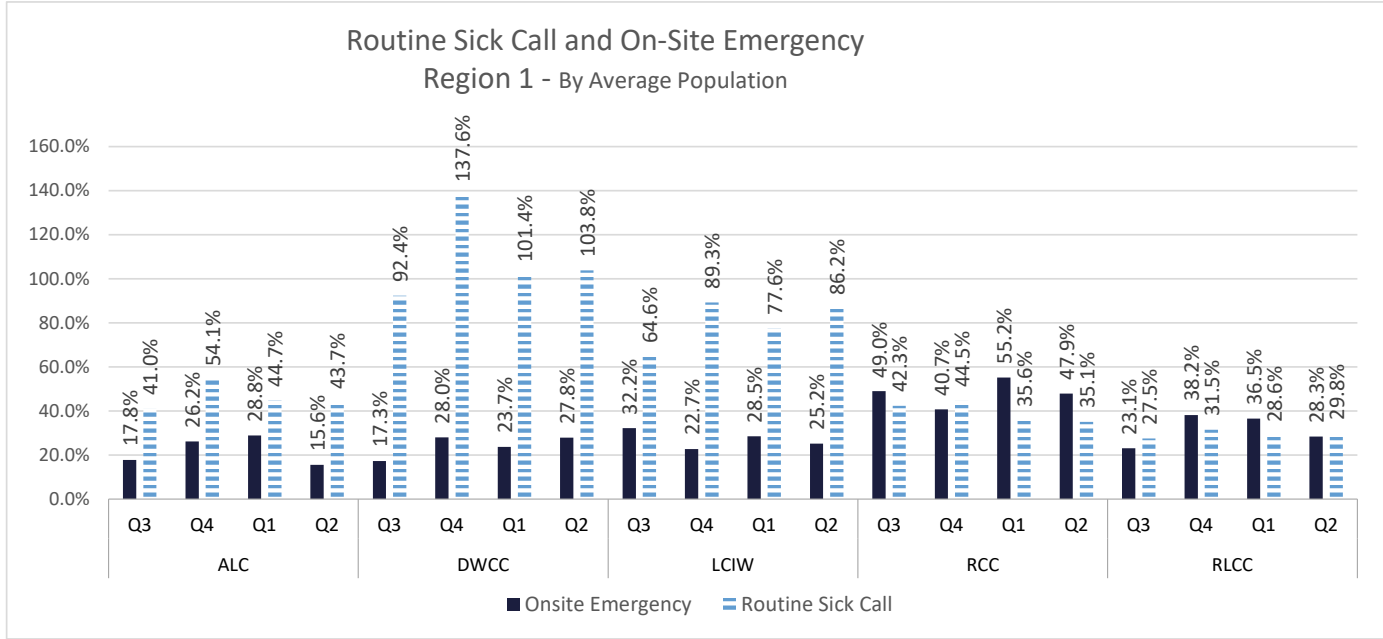
Q3 (Jan.- Mar.2021)

Q4 (April. - June. 2021)

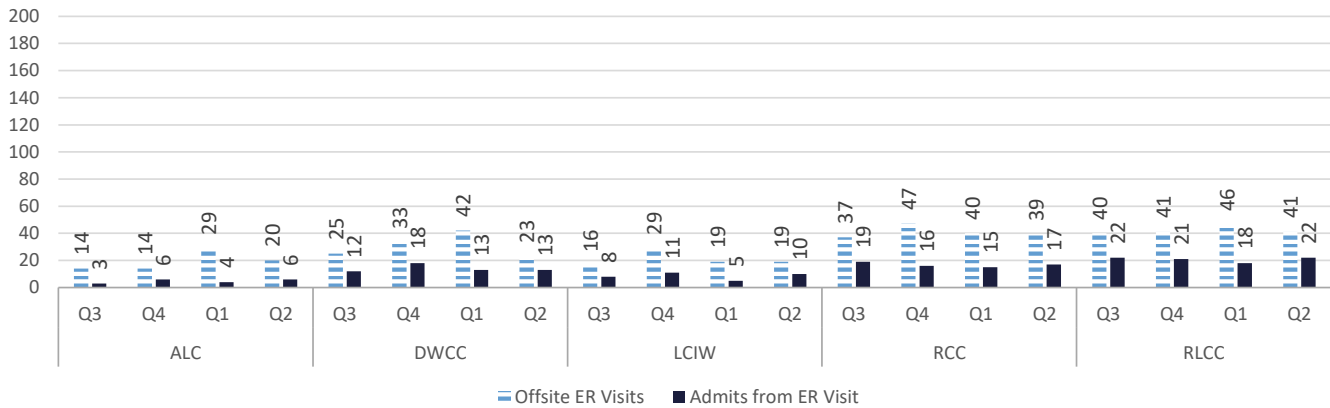
Q1 (July-Sept. 2021)

Q2 (Oct.- Dec.2021)

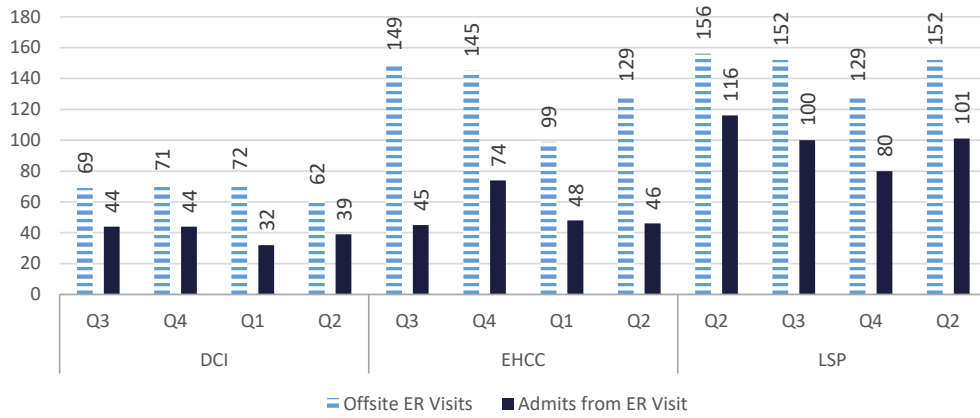
Healthcare Basic Report I



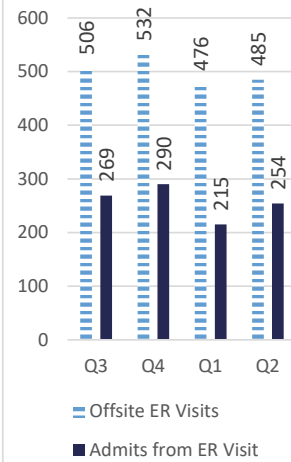
Emergency Off-Site Hospital Region 1



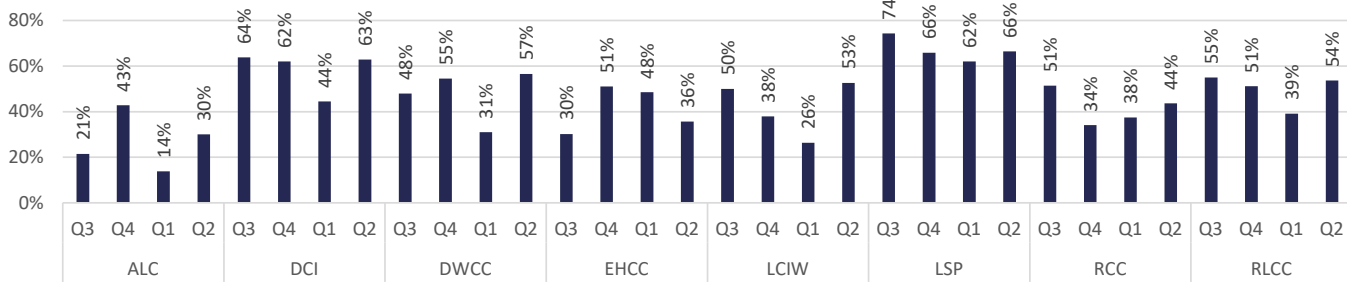
Emergency Off-Site Hospital Region 2



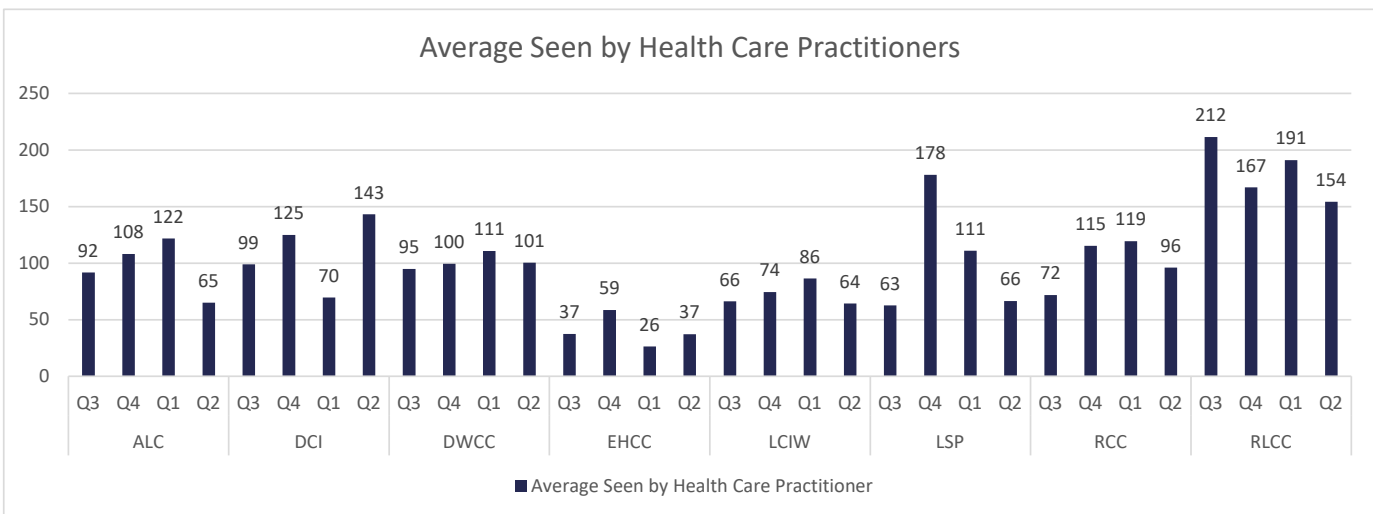
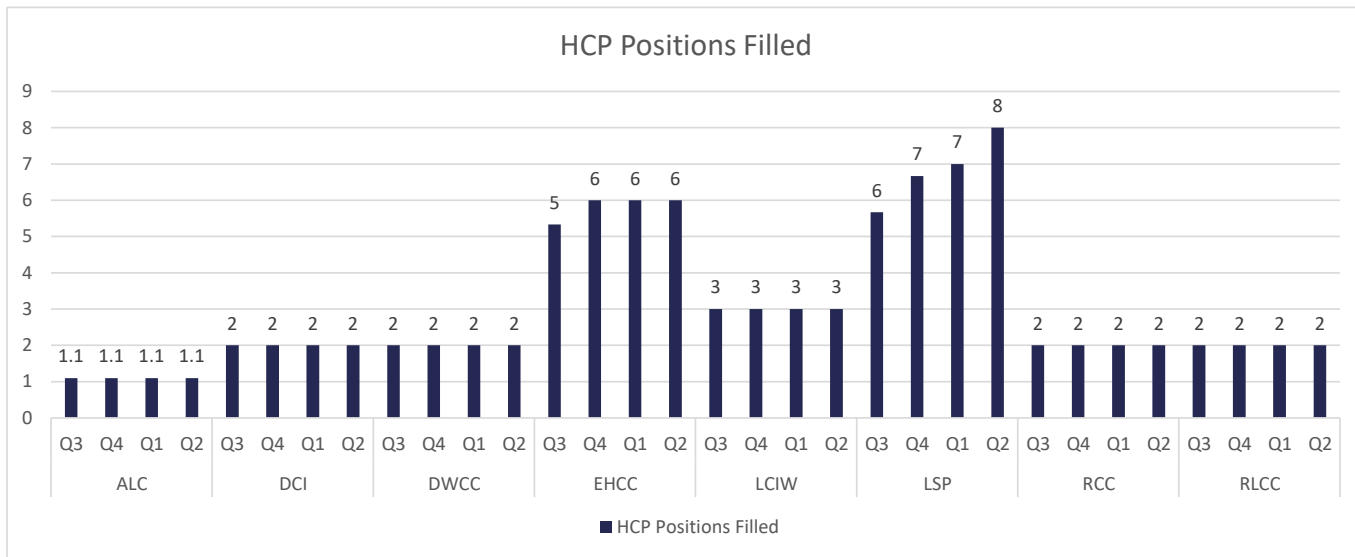
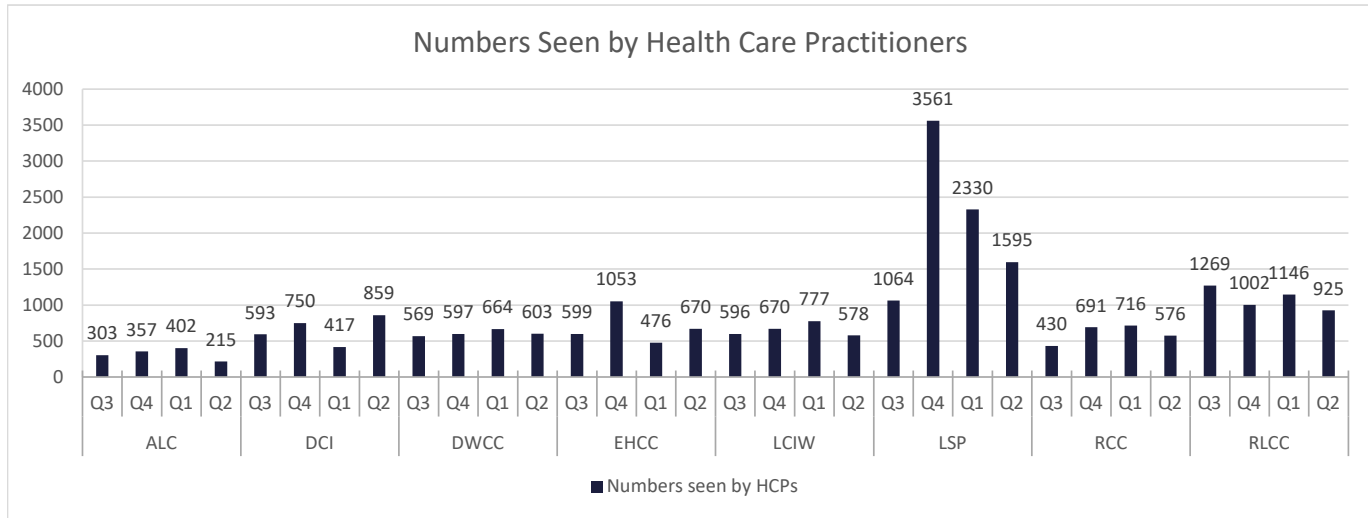
Total



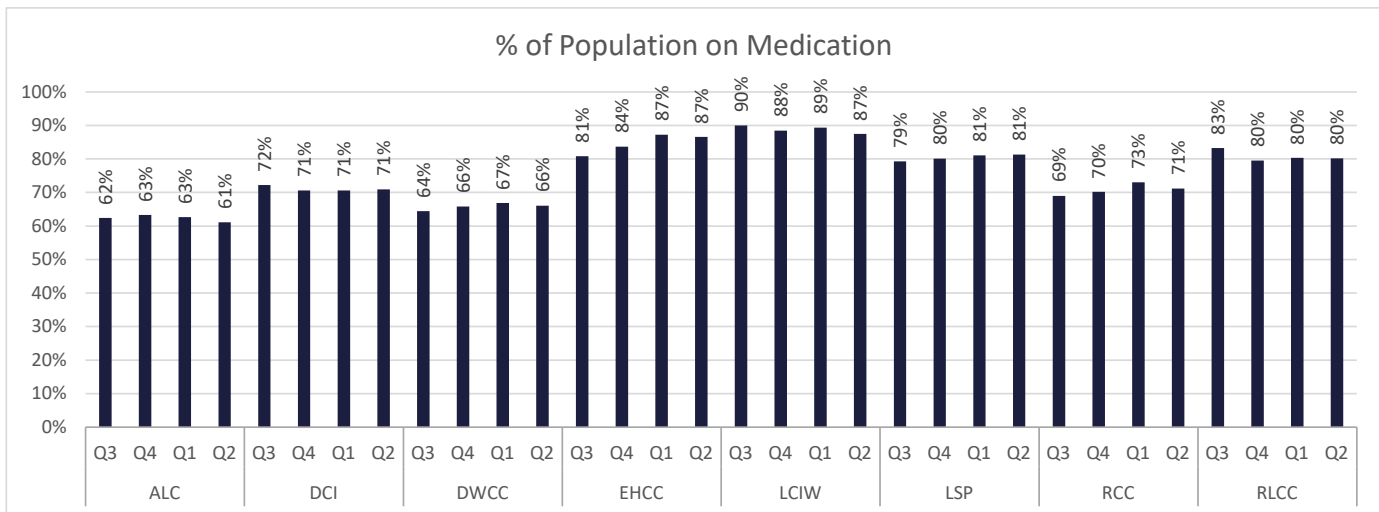
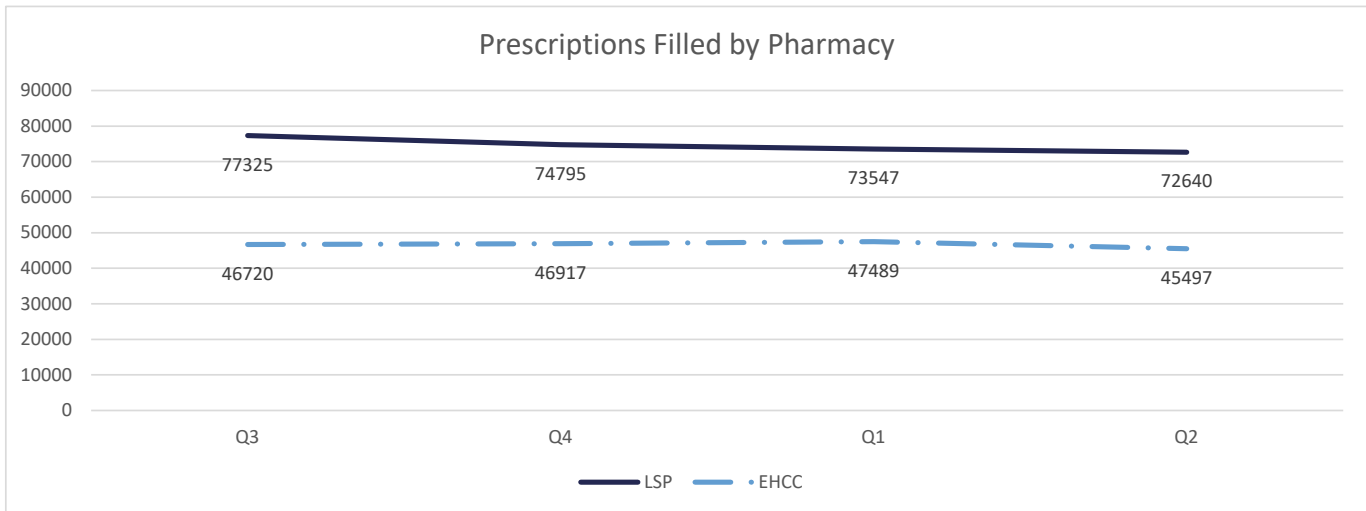
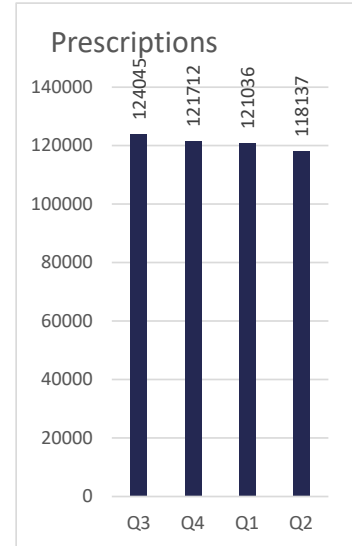
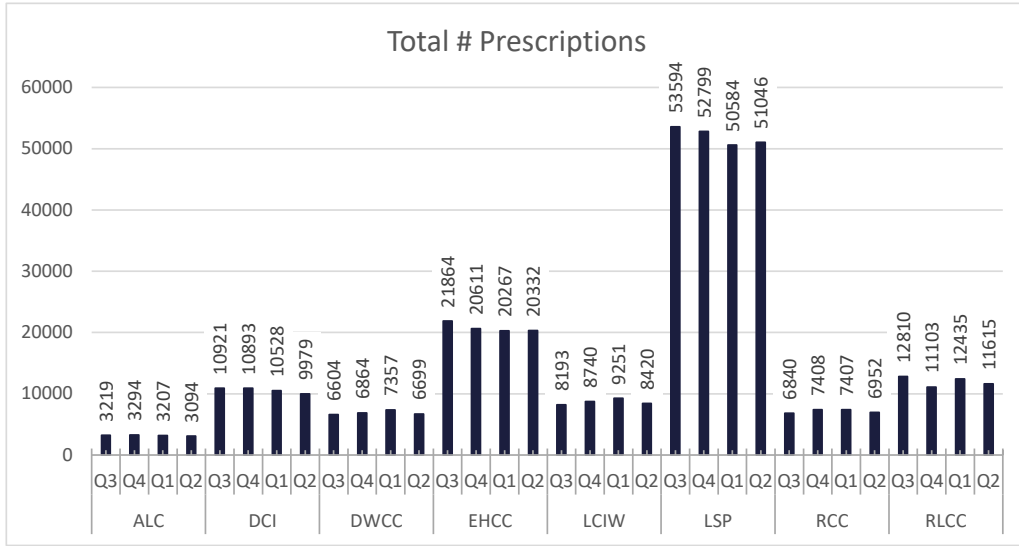
Admits from ER Visit By Offsite ER Visits



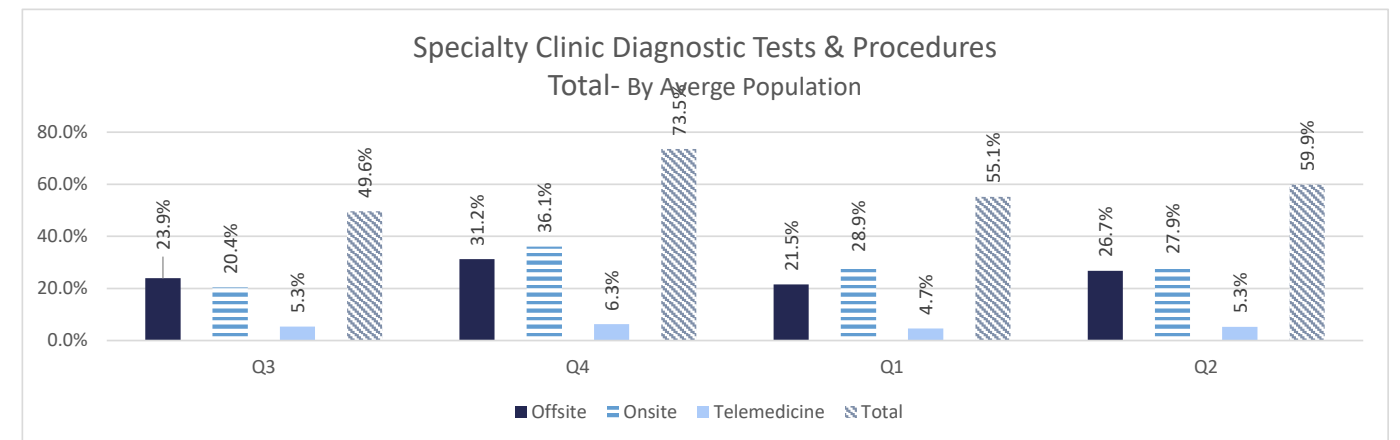
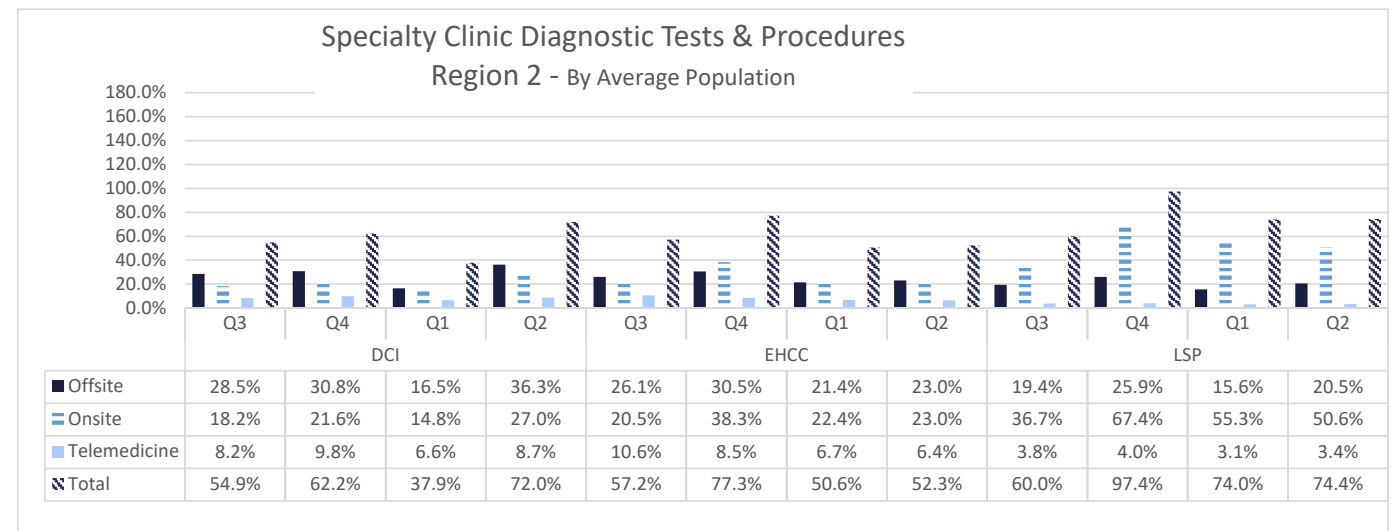
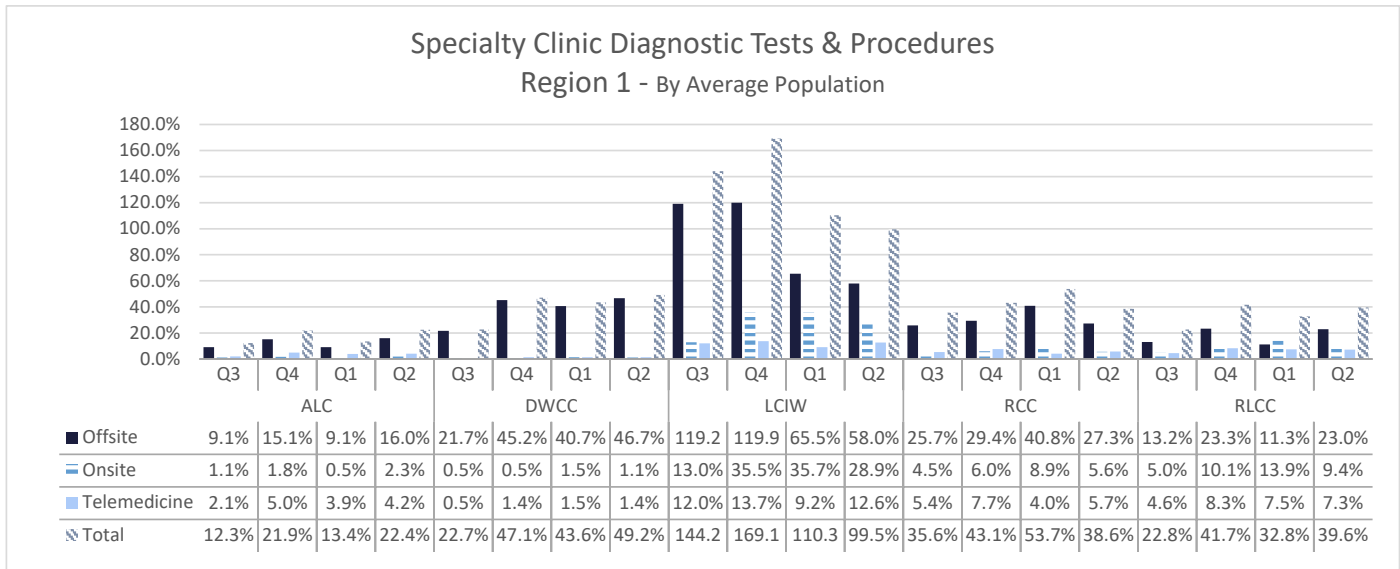
Healthcare Basic Report I



Healthcare Basic Report II

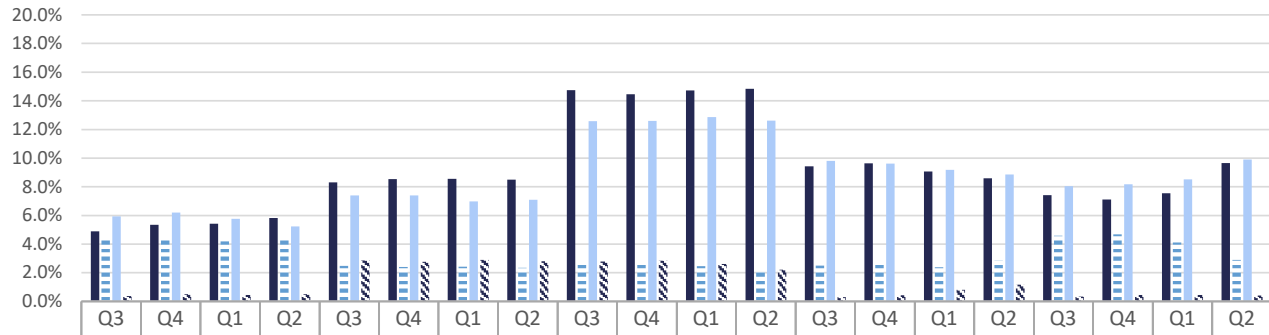


Specialty Clinic Diagnostic Tests & Procedures



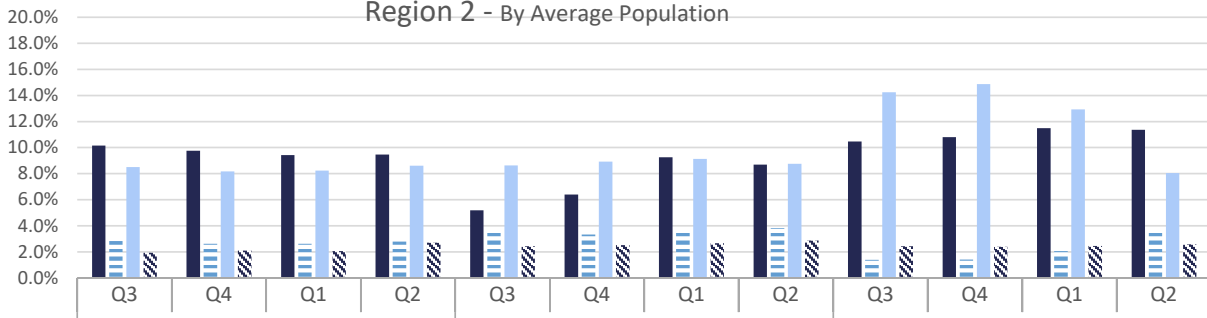
Chronic Disease

Chronic Disease
Region 1 - By Average Population



	ALC		DWCC				LCIW				RCC		RLCC							
	Q3	Q4	Q1	Q2	Q3	Q4	Q1	Q2	Q3	Q4	Q1	Q2	Q3	Q4	Q1	Q2				
■ Diabetes	4.9%	5.3%	5.4%	5.8%	8.3%	8.5%	8.6%	8.5%	14.7%	14.5%	14.7%	14.8%	9.4%	9.6%	9.1%	8.6%	7.4%	7.1%	7.5%	9.7%
■ Heart Disease	4.4%	4.3%	4.2%	4.5%	2.5%	2.4%	2.4%	2.3%	2.6%	2.6%	2.5%	2.1%	2.5%	2.6%	2.4%	2.8%	4.6%	4.7%	4.1%	2.9%
■ COPD	5.9%	6.2%	5.8%	5.2%	7.4%	7.4%	7.0%	7.1%	12.6%	12.6%	12.9%	12.6%	9.8%	9.6%	9.2%	8.9%	8.0%	8.2%	8.5%	9.9%
■ Cancer	0.4%	0.5%	0.5%	0.5%	2.9%	2.8%	2.9%	2.8%	2.8%	2.8%	2.6%	2.2%	0.3%	0.4%	0.8%	1.2%	0.3%	0.4%	0.5%	0.4%

Chronic Disease
Region 2 - By Average Population



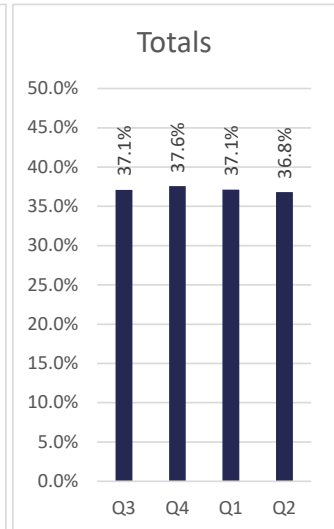
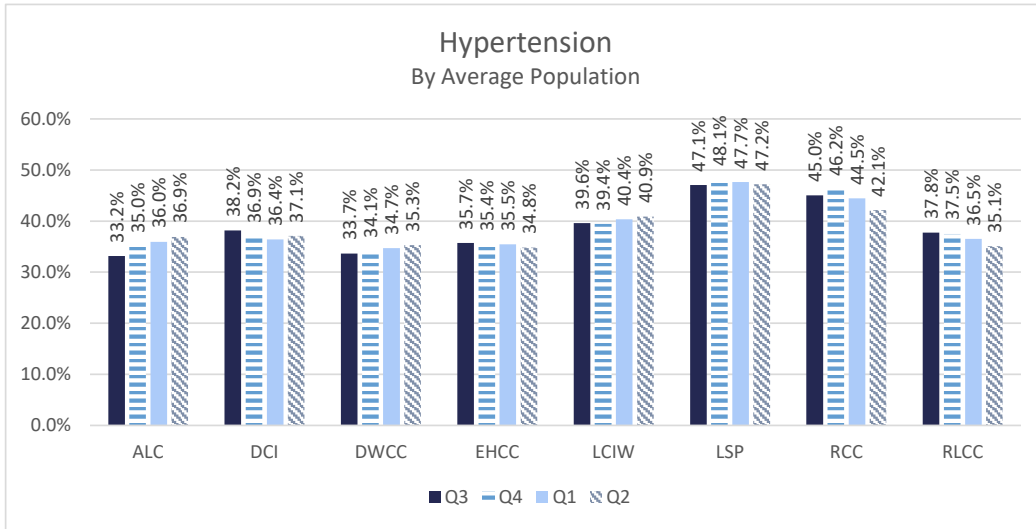
	DCI		EHCC				LSP					
	Q3	Q4	Q1	Q2	Q3	Q4	Q1	Q2	Q3	Q4	Q1	Q2
■ Diabetes	10.2%	9.8%	9.4%	9.5%	5.2%	6.4%	9.3%	8.7%	10.5%	10.8%	11.5%	11.4%
■ Heart Disease	2.8%	2.6%	2.6%	2.8%	3.8%	3.3%	3.7%	3.8%	1.4%	1.4%	2.1%	3.6%
■ COPD	8.5%	8.2%	8.2%	8.6%	8.6%	8.9%	9.1%	8.8%	14.2%	14.9%	12.9%	8.0%
■ Cancer	1.9%	2.1%	2.1%	2.7%	2.4%	2.5%	2.7%	2.9%	2.4%	2.4%	2.4%	2.6%

Chronic Disease
Total - By Average Population

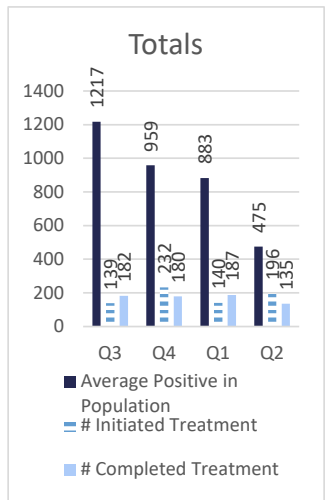
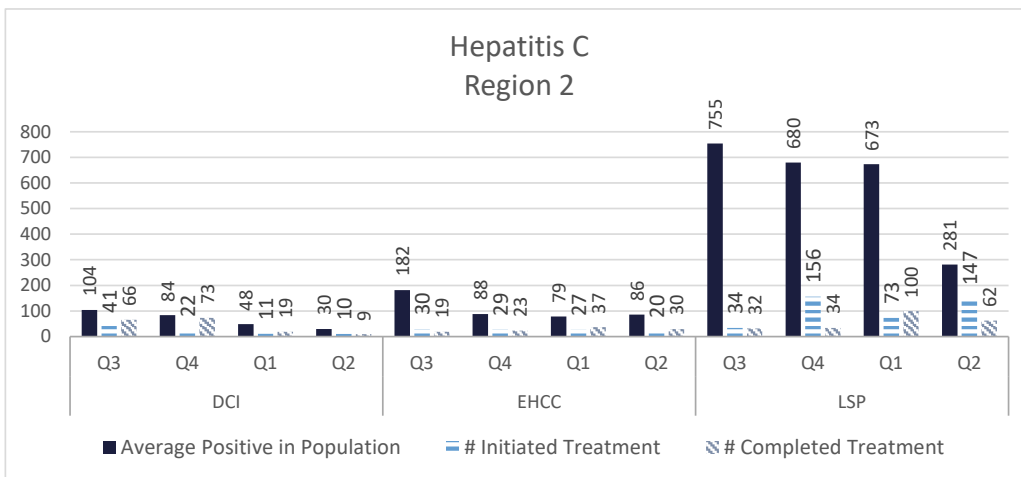
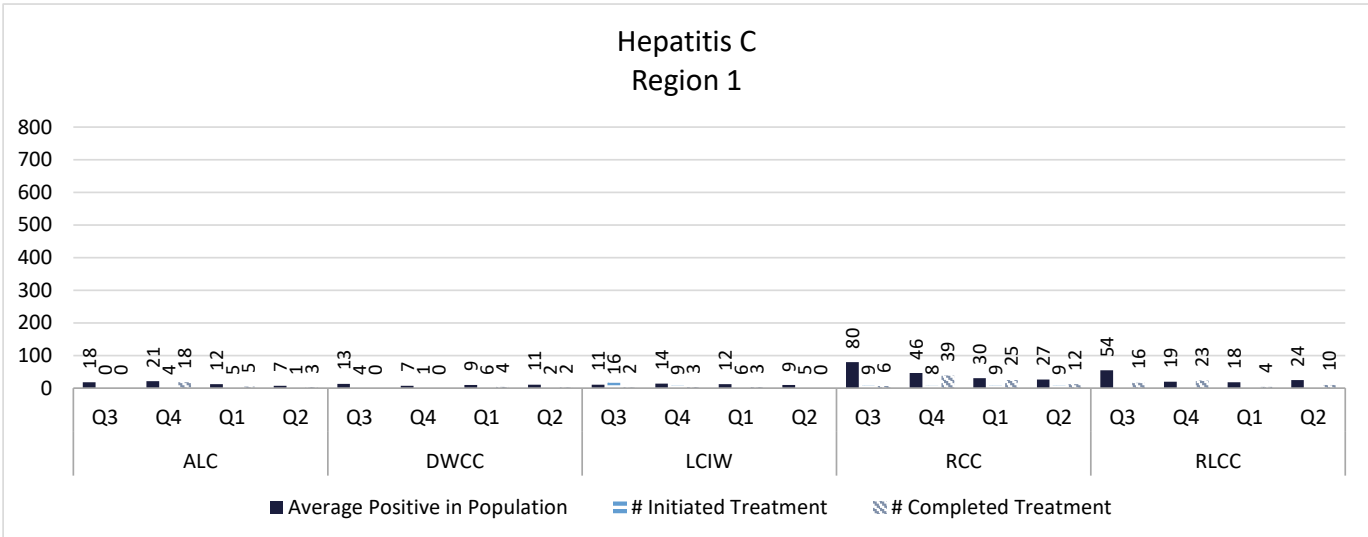


	Total			
	Q3	Q4	Q1	Q2
■ Diabetes	9.0%	9.2%	9.8%	9.9%
■ Heart Disease	2.6%	2.6%	2.8%	3.3%
■ COPD	10.7%	10.9%	10.1%	8.4%
■ Cancer	1.9%	1.9%	2.0%	2.1%

■ Diabetes ■ Heart Disease ■ COPD ■ Cancer

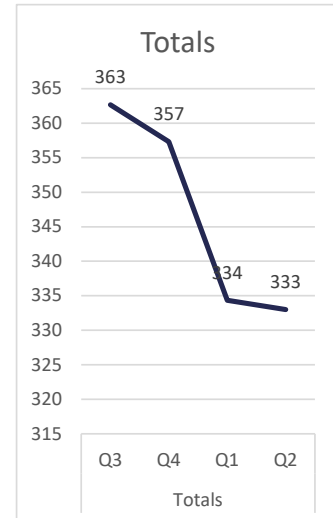
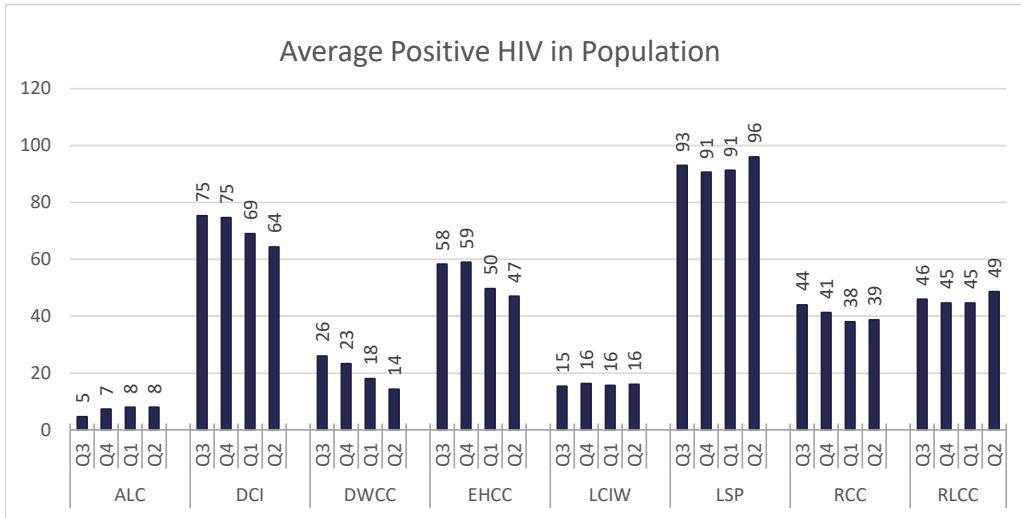


Communicable Disease

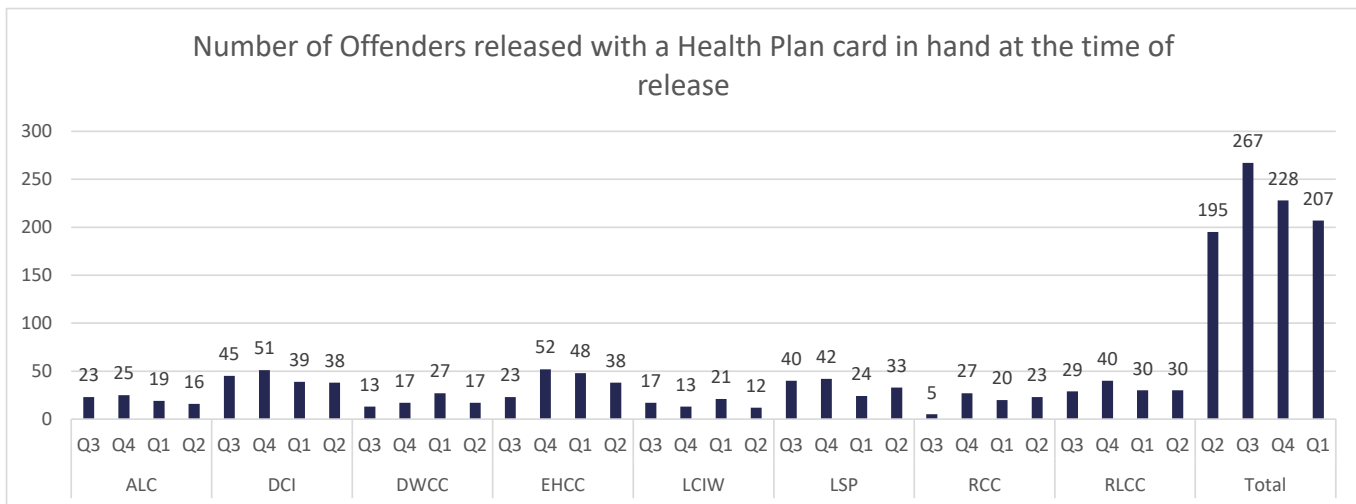
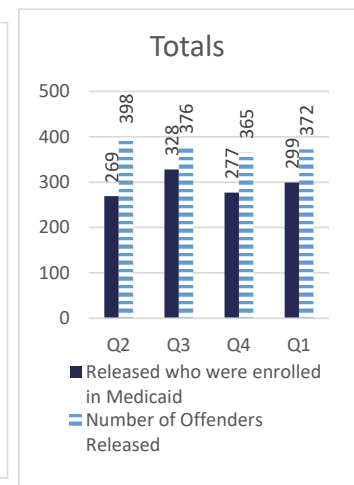
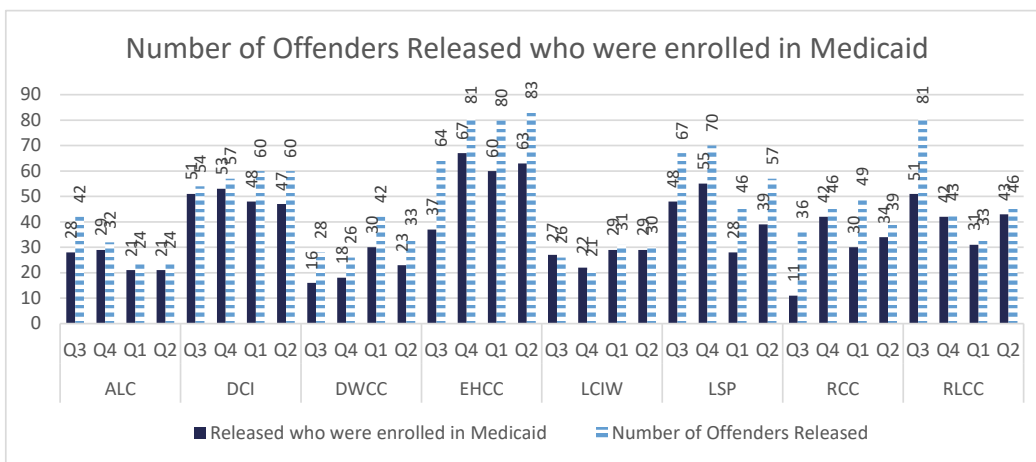


** Numbers represent averages

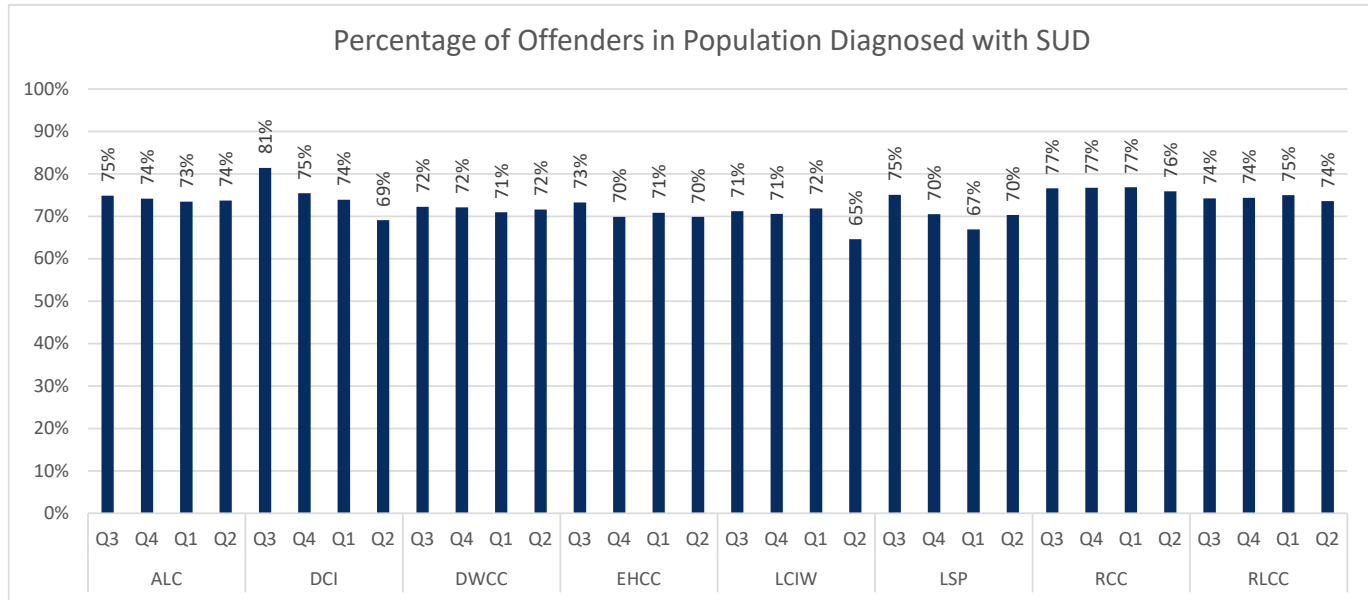
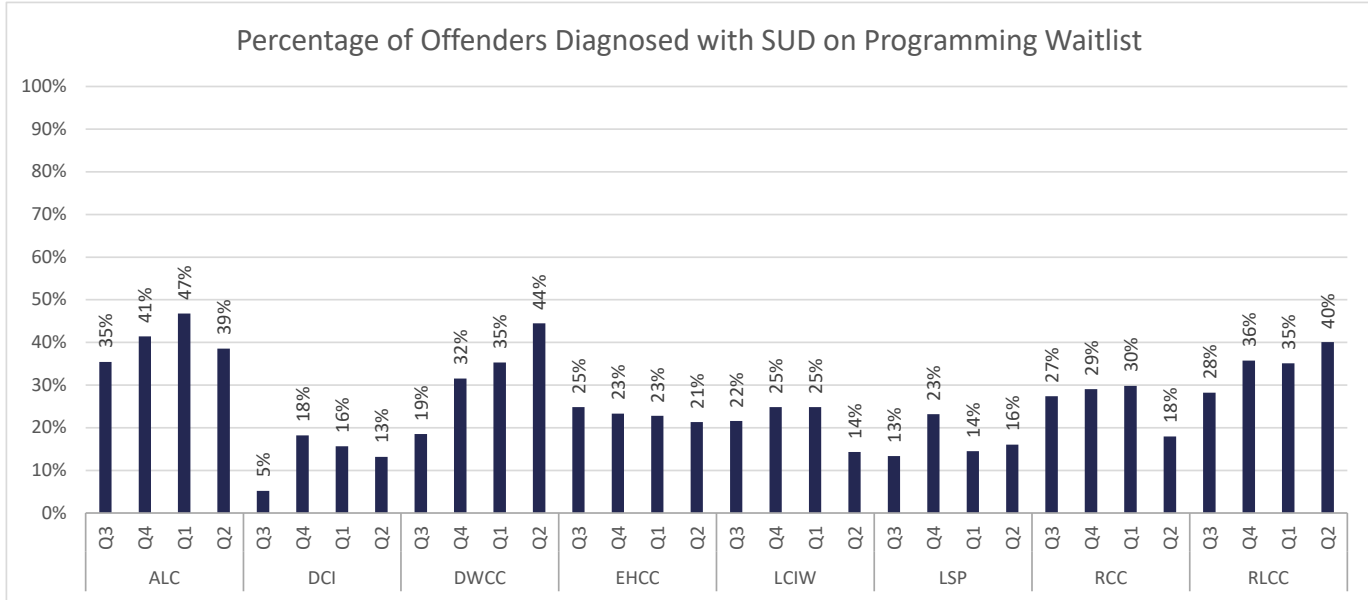
***Began reporting completed treatment July 2019



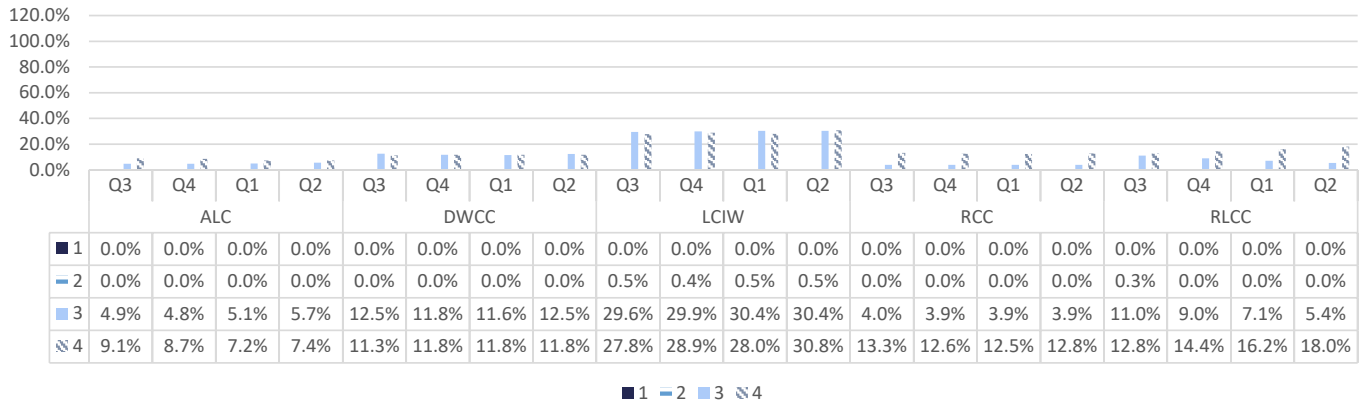
Medicaid Enrollment



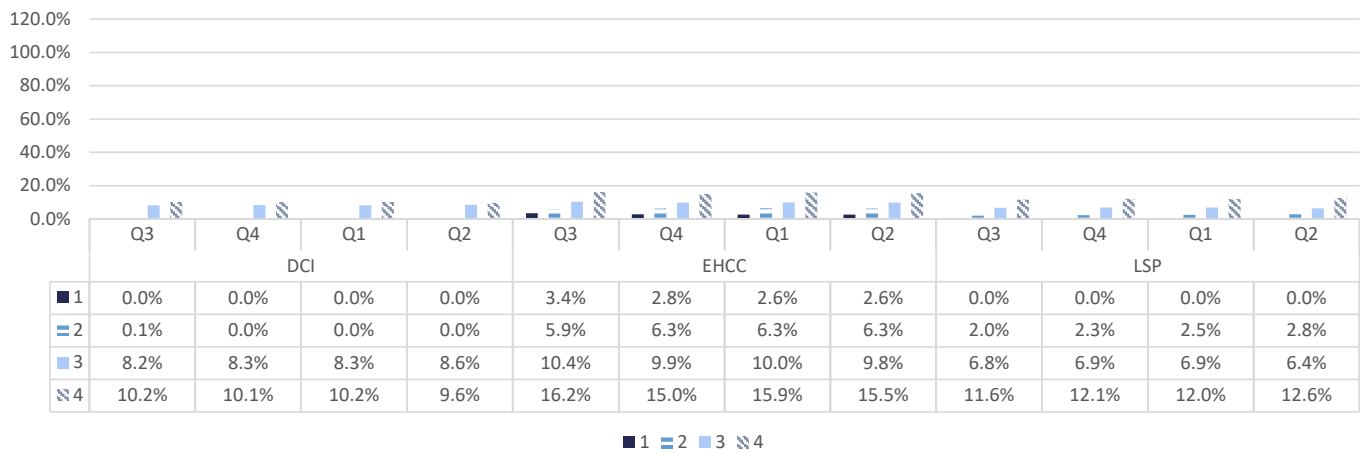
Behavioral Health



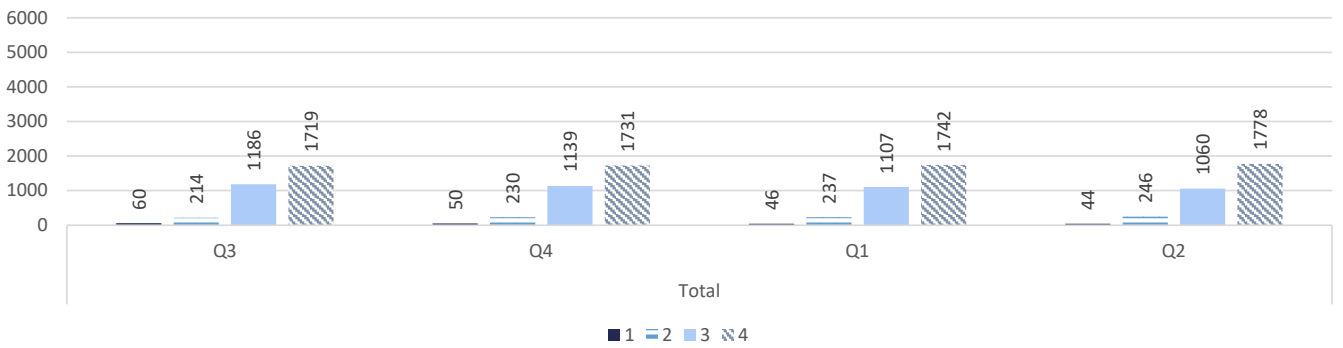
Mental Health Level of Care Region 1 - By Average Population



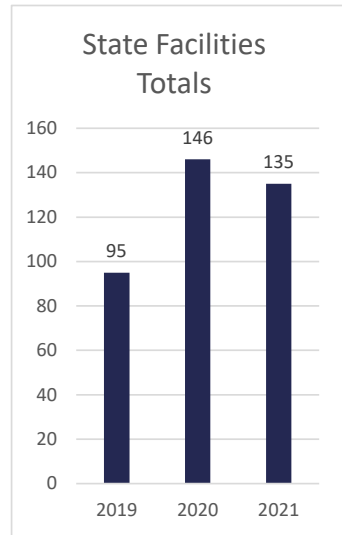
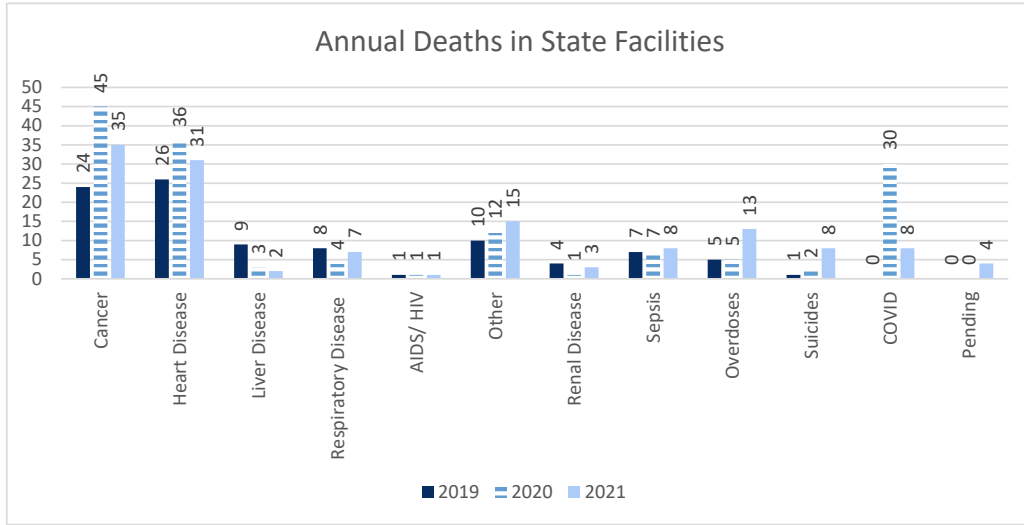
Mental Health Level of Care Region 2 - By Average Population



Mental Health Level of Care



Deaths



* 2021 is not a full year.

