

DEPARTMENT OF PUBLIC SAFETY AND CORRECTIONS
POPULATION TRENDS - RAW DATA
1989 - Present

YEAR		STATE FACILITIES	LOCAL FACILITIES	CONTRACT TWP	TOTAL CUSTODY POPULATION			Cause of Significant Change
1989	JAN	12139	4110		16249			
	FEB	12108	3811		15919	-330	-2.03%	
	MAR	12152	3826		15978	59	0.37%	
	APR	12168	3996		16164	186	1.16%	
	MAY	12183	4102		16285	121	0.75%	
	JUN	12256	4233		16489	204	1.25%	Avoyelles Corr. Opens
	JUL	12253	4309		16562	73	0.44%	
	AUG	12439	4037		16476	-86	-0.52%	
	SEP	12989	3791		16780	304	1.85%	
	OCT	13067	3893		16960	180	1.07%	
	NOV	13195	3977		17172	212	1.25%	
	DEC	13190	4078		17268	96	0.56%	
1990	JAN	13176	4153		17329	61	0.35%	
	FEB	13230	4295		17525	196	1.13%	
	MAR	13263	4362		17625	100	0.57%	Winn Corr. Opens
	APR	13605	4154		17759	134	0.76%	
	MAY	13802	4194		17996	237	1.33%	
	JUN	13861	4305		18166	170	0.94%	
	JUL	13881	4466		18347	181	1.00%	
	AUG	13858	4494		18352	5	0.03%	
	SEP	13865	4588		18453	101	0.55%	
	OCT	13910	4710		18620	167	0.91%	
	NOV	14009	4689		18698	78	0.42%	
	DEC	14079	4720		18799	101	0.54%	Allen Corr. Opens
1991	JAN	14298	4334		18632	-167	-0.89%	
	FEB	14403	4319		18722	90	0.48%	
	MAR	14504	4264		18768	46	0.25%	
	APR	14605	4247		18852	84	0.45%	
	MAY	14670	4270		18940	88	0.47%	
	JUN	14771	4281		19052	112	0.59%	
	JUL	14806	4326		19132	80	0.42%	Perdiem inc. to \$21/day
	AUG	14778	4431		19209	77	0.40%	
	SEP	14732	4585		19317	108	0.56%	
	OCT	14844	4857		19701	384	1.99%	
	NOV	14882	4976		19858	157	0.80%	
	DEC	14970	5047		20017	159	0.80%	
1992	JAN	14975	5011		19986	-31	-0.15%	
	FEB	15036	5256		20292	306	1.53%	
	MAR	15063	5312		20375	83	0.41%	
	APR	15112	5233		20345	-30	-0.15%	
	MAY	15088	5369		20457	112	0.55%	
	JUN	15114	5454		20568	111	0.54%	
	JUL	15097	5351		20448	-120	-0.58%	DOC begins prison expansion
	AUG	15270	5279		20549	101	0.49%	
	SEP	15486	5059		20545	-4	-0.02%	
	OCT	15740	4952		20692	147	0.72%	
	NOV	15968	4975		20943	251	1.21%	
	DEC	16152	4855		21007	64	0.31%	

YEAR		STATE FACILITIES	LOCAL FACILITIES	CONTRACT TWP	TOTAL CUSTODY POPULATION			Cause of Significant Change
1993	JAN	16233	4663		20896	-111	-0.53%	
	FEB	16383	4647		21030	134	0.64%	
	MAR	16502	4739		21241	211	1.00%	
	APR	16385	5065		21450	209	0.98%	
	MAY	16362	5170		21532	82	0.38%	
	JUN	16459	5291		21750	218	1.01%	
	JUL	16464	5452		21916	166	0.76%	
	AUG	16288	5799		22087	171	0.78%	LSP Camps A & H closed
	SEP	16075	6098		22173	86	0.39%	
	OCT	16144	6277		22421	248	1.12%	
	NOV	16181	6458		22639	218	0.97%	
	DEC	16141	6422		22563	-76	-0.34%	
1994	JAN	16142	6390		22532	-31	-0.14%	
	FEB	16197	6664		22861	329	1.46%	
	MAR	16229	6703		22932	71	0.31%	
	APR	16283	6818		23101	169	0.74%	
	MAY	16300	6889		23189	88	0.38%	
	JUN	16224	7099		23323	134	0.58%	
	JUL	16241	7115		23356	33	0.14%	
	AUG	16281	7326		23607	251	1.07%	
	SEP	16132	7445		23577	-30	-0.13%	
	OCT	16140	7766		23906	329	1.40%	
	NOV	16093	8038		24131	225	0.94%	
	DEC	16071	8149		24220	89	0.37%	
1995	JAN	16018	8081		24099	-121	-0.50%	
	FEB	16225	8228		24453	354	1.47%	
	MAR	16203	8243		24446	-7	-0.03%	
	APR	16184	8318		24502	56	0.23%	
	MAY	16166	8604		24770	268	1.09%	
	JUN	16266	8601		24867	97	0.39%	
	JUL	16234	8770		25004	137	0.55%	
	AUG	16383	8751		25134	130	0.52%	ALC, AVC, WNC operational capacities inc. to 1474 ea.
	SEP	16497	8741		25238	104	0.41%	
	OCT	16803	8799		25602	364	1.44%	
	NOV	16986	8683		25669	67	0.26%	
	DEC	17077	8600		25677	8	0.03%	
1996	JAN	16975	8472		25447	-230	-0.90%	
	FEB	17246	8480		25726	279	1.10%	
	MAR	17407	8471		25878	152	0.59%	
	APR	17539	8682		26221	343	1.33%	
	MAY	17470	8786		26256	35	0.13%	
	JUN	17535	8752		26287	31	0.12%	
	JUL	17516	8914		26430	143	0.54%	
	AUG	17532	8913		26445	15	0.06%	
	SEP	17553	8951		26504	59	0.22%	
	OCT	17600	9012		26612	108	0.41%	
	NOV	17630	9264		26894	282	1.06%	
	DEC	17635	9364		26999	105	0.39%	

YEAR		STATE FACILITIES	LOCAL FACILITIES	CONTRACT TWP	TOTAL CUSTODY POPULATION		Cause of Significant Change
1997	JAN	17597	9256		26853	-146	-0.54%
	FEB	17838	9243		27081	228	0.85%
	MAR	17857	9587		27444	363	1.34%
	APR	17797	9984		27781	337	1.23%
	MAY	17727	10305		28032	251	0.90%
	JUN	17856	10353		28209	177	0.63%
	JUL	18014	10540		28554	345	1.22%
	AUG	18174	10677		28851	297	1.04%
	SEP	18384	10702		29086	235	0.81%
	OCT	18519	10763		29282	196	0.67%
	NOV	18529	10868		29397	115	0.39%
	DEC	18470	10795		29265	-132	-0.45%
1998	JAN	18559	10784		29343	78	0.27%
	FEB	18554	11294		29848	505	1.72%
	MAR	18565	11517		30082	234	0.78%
	APR	18606	11717		30323	241	0.80%
	MAY	18616	11825		30441	118	0.39%
	JUN	18679	12228		30907	466	1.53%
	JUL	18705	12419		31124	217	0.70%
	AUG	18819	12500		31319	195	0.63%
	SEP	18880	12701		31581	262	0.84%
	OCT	19001	12976		31977	396	1.25%
	NOV	19004	13267		32271	294	0.92%
	DEC	19016	13211		32227	-44	-0.14%
1999	JAN	19053	13364		32417	32417	#DIV/0!
	FEB	19072	13364		32436	19	0.06%
	MAR	19259	13214		32473	37	0.11%
	APR	19350	13380		32730	257	0.79%
	MAY	19129	13897		33026	296	0.90%
	JUN	19320	14099		33419	393	1.19%
	JUL	19320	14099		33419	0	0.00%
	AUG	19239	14170		33409	-10	-0.03%
	SEP	19278	14365		33643	234	0.70%
	OCT	19281	14409		33690	47	0.14%
	NOV	19267	14649		33916	226	0.67%
	DEC	19174	14838		34012	96	0.28%
2000	JAN	19292	14671		33963	-49	-0.14%
	FEB	19325	15081		34406	443	1.30%
	MAR	19406	15300		34706	300	0.87%
	APR	19403	15158		34561	-145	-0.42%
	MAY	19259	15259		34518	-43	-0.12%
	JUN	19510	15194		34704	186	0.54%
	JUL	19541	15027		34568	-136	-0.39%
	AUG	19443	15285		34728	160	0.46%
	SEP	19478	15412		34890	162	0.47%
	OCT	19440	15596		35036	146	0.42%
	NOV	19515	15596		35111	75	0.21%
	DEC	19450	15504		34954	-157	-0.45%

YEAR		STATE FACILITIES	LOCAL FACILITIES	CONTRACT TWP	TOTAL CUSTODY POPULATION			Cause of Significant Change
2001	JAN	19476	15397		34873	-81	-0.23%	
	FEB	19651	15537		35188	315	0.90%	
	MAR	19611	15559		35170	-18	-0.05%	
	APR	19543	15742		35285	115	0.33%	
	MAY	19534	15776		35310	25	0.07%	
	JUN	19528	15901		35429	119	0.34%	
	JUL	19663	15670		35333	-96	-0.27%	
	AUG	19603	15707		35310	-23	-0.07%	
	SEP	19604	15825		35429	119	0.34%	
	OCT	19929	16063		35992	563	1.59%	
	NOV	19929	15995		35924	-68	-0.19%	
	DEC	19949	15874		35823	-101	-0.28%	
2002	JAN	19547	16114		35661	-162	-0.45%	
	FEB	19587	16063		35650	-11	-0.03%	
	MAR	19601	16138		35739	89	0.25%	
	APR	19593	16162		35755	16	0.04%	
	MAY	19593	16219		35812	57	0.16%	
	JUN	19593	16242		35835	23	0.06%	
	JUL	19907	16252		36159	324	0.90%	
	AUG	19911	16251		36162	3	0.01%	
	SEP	19911	16215		36126	-36	-0.10%	
	OCT	19927	16145		36072	-54	-0.15%	
	NOV	19830	15973		35803	-269	-0.75%	
	DEC	19830	16048		35878	75	0.21%	
2003	JAN	19547	15927		35474	-404	-1.13%	
	FEB	19587	16029		35616	142	0.40%	
	MAR	19601	16050		35651	35	0.10%	
	APR	19593	16222		35815	164	0.46%	
	MAY	19639	16248		35887	72	0.20%	
	JUN	19575	16321		35896	9	0.03%	
	JUL	19509	16512		36021	125	0.35%	
	AUG	19504	16525		36029	8	0.02%	
	SEP	19425	16782		36207	178	0.49%	
	OCT	19405	16798		36203	-4	-0.01%	
	NOV	19403	16726		36129	-74	-0.20%	
	DEC	19318	16547		35865	-264	-0.73%	
2004	JAN	19326	16559		35885	20	0.06%	Due to Hurricanes Katrina (8/29/05) and Rita(9/24/05), evacuees were taken into our population.
	FEB	19321	16569		35890	5	0.01%	Aug '05: Of the 25,378 in state facilities, 3,814 are Pre-trial Non-state offenders/arrestees
	MAR	19393	16776		36169	279	0.78%	Aug '05: Of the 16,819 in local facilities, 1309 are Pre-trial Non-state offenders/arrestees
	APR	19530	16886		36416	247	0.68%	Sep '05: Of the 25,437 in state facilities, 920 are physically located in Bureau of Prisons in Florida; 4,298 are Pre-trial Non-state offenders/arrestees
	MAY	19457	17152		36609	193	0.53%	Sep '05: Of the 17,953 in local facilities, 1,655 are Pre-trial Non-state offenders/arrestees
	JUN	19381	17147		36528	-81	-0.22%	Oct '05: Of the 23,045 in state facilities, 777 are physically located in Bureau of Prisons in Florida; 2,771 are Pre-trial Non-state offenders/arrestees
	JUL	19365	17110		36475	-53	-0.15%	
	AUG	19321	17265		36586	111	0.30%	Oct '05: Of the 17,558 in local facilities, 1,396 are Pre-trial Non-state offenders/arrestees
	SEP	19400	17164		36564	-22	-0.06%	Nov '05: Of the 22,065 in state facilities, 579 are physically located in Bureau of Prisons in Florida
	OCT	19341	17409		36750	186	0.51%	2,084 are Pre-trial Non-state offenders/arrestees
	NOV	19276	17422		36698	-52	-0.14%	Nov '05: Of the 17,581 in local facilities, 1,474 are Pre-trial Non-state offenders/arrestees
	DEC	19265	17269		36534	-164	-0.45%	Dec '05: Of the 21,583 in state facilities, 529 are physically located in Bureau of Prisons in Florida 1,682 are Pre-trial Non-state offenders/arrestees Dec '05: Of the 17,456 in local facilities, 1,422 are Pre-trial Non-state offenders/arrestees

YEAR		STATE FACILITIES	LOCAL FACILITIES	CONTRACT TWP	TOTAL CUSTODY POPULATION			Cause of Significant Change
2005	JAN	19300	17066		36366	-168	-0.46%	Jan '06: Of the 20,501 in state facilities, 289 are physically located in Bureau of Prisons in Florida 703 are Pre-trial Non-state offenders/arrestees Jan '06: Of the 17,780 in local facilities, 1,838 are Pre-trial Non-state offenders/arrestees Feb '06: Of the 20,255 in state facilities, 532 are Pre-trial Non-state offenders/arrestees Feb '06: Of the 17,609 in local facilities, 1,475 are Pre-trial Non-state offenders/arrestees Mar '06: Of the 20,344 in state facilities, 753 are Pre-trial Non-state offenders/arrestees Mar '06: Of the 17,327 in local facilities, 1,347 are Pre-trial Non-state offenders/arrestees Apr '06: Of the 20,113 in state facilities, 474 are Pre-trial Non-state offenders/arrestees Apr '06: Of the 16,887 in local facilities, 1,010 are Pre-trial Non-state offenders/arrestees May '06: Of the 20,042 in state facilities, 320 are Pre-trial Non-state offender/arrestees May '06: Of the 16,525 in local facilities, 584 are Pre-trial Non-state offenders/arrestees June '06: Of the 20,341 in state facilities, 381 are Pre-trial Non-state offenders/arrestees June '06: Of the 16,182 in local facilities, 395 are Pre-trial Non-state offenders/arrestees July '06: Of the 20,396 in state facilities, 446 are Pre-trial Non-state offenders/arrestees July '06: Of the 16,112 in local facilities, 396 are Pre-trial Non-state offenders/arrestees Aug '06: Of the 20,554 in state facilities, 528 are Pre-trial Non-state offenders/arrestees Aug '06: Of the 16,044 in local facilities, 302 are Pre-trial Non-state offenders/arrestees Sept '06: Of the 20,539 in state facilities, 513 are Pre-trial Non-state offenders/arrestees Sept '06: Of the 16,171 in local facilities, 209 are Pre-trial Non-state offenders/arrestees Oct '06: Of the 20,799 in state facilities, 641 are Pre-trial Non-state Offenders/arrestees Oct '06: Of the 16,285 in local facilities, 117 are Pre-trial Non-state offenders/arrestees Nov '06: Of the 20,852 in state facilities, 624 are Pre-trial Non-state Offenders/arrestees Nov '06: Of the 16,268 in local facilities, 93 are Pre-trial Non-state offenders/arrestees Dec '06: Of the 20,815 in state facilities, 572 are Pre-trial Non-state offenders/arrestees Dec '06: Of the 15,995 in local facilities, 64 are Pre-trial Non-state offenders/arrestees Jan '07: Of the 20,580 in state facilities, 270 are Pre-trial Non-state offenders/arrestees Jan '07: Of the 15,901 in local facilities, 39 are Pre-trial Non-state offenders/arrestees Feb '07: Of the 20,577 in state facilities, 213 are Pre-trial Non-state offender/arrestees Feb '07: Of the 15,942 in local facilities, 13 are Pre-trial Non-state offenders/arrestees Mar '07: Of the 20,596 in state facilities, 178 are Pre-trial Non-state offenders/arrestees Mar '07: Of the 16,066 in local facilities, 13 are Pre-trial Non-state offenders/arrestees Apr '07: Of the 20,795 in state facilities, 231 are Pre-trial Non-state offenders/arrestees Apr '07: Of the 16,093 in local facilities, 1 is a Pre-trial Non-state offender/arrestee May '07: Of the 20,772 in state facilities, 217 are Pre-trial Non-state offenders/arrestees May '07: Of the 16,097 in local facilities, 1 is a Pre-trial Non-state offender/arrestee June '07: Of the 20,869 in state facilities, 203 are Pre-trial Non-state offenders/arrestees June '07: Of the 16,121 in local facilities, 1 is a Pre-trial Non-state offender/arrestee July '07: Of the 20,790 in state facilities, 214 are Pre-trial Non-state offenders/arrestees July '07: Of the 16,335 in local facilities, 1 is a Pre-trial Non-state offender/arrestee Aug '07: Of the 20,750 in state facilities, 181 are Pre-trial Non-state offenders/arrestees Aug '07: Of the 16,625 in local facilities, 1 is a Pre-trial Non-state offender/arrestee Sep '07: Of the 20,750 in state facilities, 181 are Pre-trial Non-state offenders/arrestees Sep '07: Of the 16,625 in local facilities, 1 is a Pre-trial Non-state offender/arrestee Oct '07: Of the 20,600 in state facilities, 173 are Pre-trial Non-state offenders/arrestees Oct '07: Of the 17,051 in local facilities, 1 is a Pre-trial Non-state offender/arrestee Nov '07: Of the 20,632 in state facilities, 217 are Pre-trial Non-state offenders/arrestees Nov '07: Of the 17,000 in local facilities, 1 is a Pre-trial Non-state offender/arrestee Dec '07: Of the 20,461 in state facilities, 198 are Pre-trial Non-state offenders/arrestees Dec '07: Of the 17,034 in local facilities, 1 is a Pre-trial Non-state offender/arrestee Jan '08: Of the 20,507 in state facilities, 199 are physically located in Bureau of Prisons in Florida Jan '08: Of the 17,060 in local facilities, 1 is a Pre-trial Non-state offenders/arrestees Feb '08: Of the 20,575 in state facilities, 200 are Pre-trial Non-state offenders/arrestees Feb '08: Of the 17,024 in local facilities, 1 is a Pre-trial Non-state offenders/arrestees Mar '08: Of the 20,537 in state facilities, 144 are Pre-trial Non-state offenders/arrestees Mar '08: As of this month, local facilities are no longer housing Pre-trial Non-state offenders/arrestees Apr '08: Of the 20,671 in state facilities, 200 are Pre-trial Non-state offenders/arrestees May '08: Of the 20,644 in state facilities, 152 are Pre-trial Non-state offenders/arrestees June '08: Of the 20,622 in state facilities, 307 are Pre-trial Non-state offenders/arrestees July '08: Of the 20,782 in state facilities, 183 are Pre-trial Non-state offenders/arrestees
	FEB	19439	17378		36817	451	1.24%	
	MAR	19569	17327		36896	79	0.21%	
	APR	19435	17431		36866	-30	-0.08%	
	MAY	19484	17708		37192	326	0.88%	
	JUN	19591	17645		37236	44	0.12%	
	JUL	19589	17685		37274	38	0.10%	
	AUG	25378	16819		42197	4923	13.21%	
	SEP	25437	17953		43390	1193	2.83%	
	OCT	23045	17558		40603	-2787	-6.42%	
	NOV	22065	17581		39646	-957	-2.36%	
	DEC	21583	17456		39039	-607	-1.53%	
2006	JAN	20501	17780		38281	-758	-1.94%	Feb '07: Of the 15,942 in local facilities, 13 are Pre-trial Non-state offenders/arrestees Mar '07: Of the 20,596 in state facilities, 178 are Pre-trial Non-state offenders/arrestees Mar '07: Of the 16,066 in local facilities, 13 are Pre-trial Non-state offenders/arrestees Apr '07: Of the 20,795 in state facilities, 231 are Pre-trial Non-state offenders/arrestees Apr '07: Of the 16,093 in local facilities, 1 is a Pre-trial Non-state offender/arrestee May '07: Of the 20,772 in state facilities, 217 are Pre-trial Non-state offenders/arrestees May '07: Of the 16,097 in local facilities, 1 is a Pre-trial Non-state offender/arrestee June '07: Of the 20,869 in state facilities, 203 are Pre-trial Non-state offenders/arrestees June '07: Of the 16,121 in local facilities, 1 is a Pre-trial Non-state offender/arrestee July '07: Of the 20,790 in state facilities, 214 are Pre-trial Non-state offenders/arrestees July '07: Of the 16,335 in local facilities, 1 is a Pre-trial Non-state offender/arrestee Aug '07: Of the 20,750 in state facilities, 181 are Pre-trial Non-state offenders/arrestees Aug '07: Of the 16,625 in local facilities, 1 is a Pre-trial Non-state offender/arrestee Sep '07: Of the 20,750 in state facilities, 181 are Pre-trial Non-state offenders/arrestees Sep '07: Of the 16,625 in local facilities, 1 is a Pre-trial Non-state offender/arrestee Oct '07: Of the 20,600 in state facilities, 173 are Pre-trial Non-state offenders/arrestees Oct '07: Of the 17,051 in local facilities, 1 is a Pre-trial Non-state offender/arrestee Nov '07: Of the 20,632 in state facilities, 217 are Pre-trial Non-state offenders/arrestees Nov '07: Of the 17,000 in local facilities, 1 is a Pre-trial Non-state offender/arrestee Dec '07: Of the 20,461 in state facilities, 198 are Pre-trial Non-state offenders/arrestees Dec '07: Of the 17,034 in local facilities, 1 is a Pre-trial Non-state offender/arrestee Jan '08: Of the 20,507 in state facilities, 199 are physically located in Bureau of Prisons in Florida Jan '08: Of the 17,060 in local facilities, 1 is a Pre-trial Non-state offenders/arrestees Feb '08: Of the 20,575 in state facilities, 200 are Pre-trial Non-state offenders/arrestees Feb '08: Of the 17,024 in local facilities, 1 is a Pre-trial Non-state offenders/arrestees Mar '08: Of the 20,537 in state facilities, 144 are Pre-trial Non-state offenders/arrestees Mar '08: As of this month, local facilities are no longer housing Pre-trial Non-state offenders/arrestees Apr '08: Of the 20,671 in state facilities, 200 are Pre-trial Non-state offenders/arrestees May '08: Of the 20,644 in state facilities, 152 are Pre-trial Non-state offenders/arrestees June '08: Of the 20,622 in state facilities, 307 are Pre-trial Non-state offenders/arrestees July '08: Of the 20,782 in state facilities, 183 are Pre-trial Non-state offenders/arrestees
	FEB	20255	17609		37864	-417	-1.09%	
	MAR	20344	17327		37671	-193	-0.51%	
	APR	20113	16887		37000	-671	-1.78%	
	MAY	20042	16525		36567	-433	-1.17%	
	JUN	20341	16182		36523	-44	-0.12%	
	JUL	20396	16112		36508	-15	-0.04%	
	AUG	20554	16044		36598	90	0.25%	
	SEP	20539	16171		36710	112	0.31%	
	OCT	20799	16285		37084	374	1.02%	
	NOV	20852	16268		37120	36	0.10%	
	DEC	20815	15995		36810	-310	-0.84%	
2007	JAN	20580	15901		36481	36481	#DIV/0!	Mar '07: Of the 20,596 in state facilities, 178 are Pre-trial Non-state offenders/arrestees Mar '07: Of the 16,066 in local facilities, 13 are Pre-trial Non-state offenders/arrestees Apr '07: Of the 20,795 in state facilities, 231 are Pre-trial Non-state offenders/arrestees Apr '07: Of the 16,093 in local facilities, 1 is a Pre-trial Non-state offender/arrestee May '07: Of the 20,772 in state facilities, 217 are Pre-trial Non-state offenders/arrestees May '07: Of the 16,097 in local facilities, 1 is a Pre-trial Non-state offender/arrestee June '07: Of the 20,869 in state facilities, 203 are Pre-trial Non-state offenders/arrestees June '07: Of the 16,121 in local facilities, 1 is a Pre-trial Non-state offender/arrestee July '07: Of the 20,790 in state facilities, 214 are Pre-trial Non-state offenders/arrestees July '07: Of the 16,335 in local facilities, 1 is a Pre-trial Non-state offender/arrestee Aug '07: Of the 20,750 in state facilities, 181 are Pre-trial Non-state offenders/arrestees Aug '07: Of the 16,625 in local facilities, 1 is a Pre-trial Non-state offender/arrestee Sep '07: Of the 20,750 in state facilities, 181 are Pre-trial Non-state offenders/arrestees Sep '07: Of the 16,625 in local facilities, 1 is a Pre-trial Non-state offender/arrestee Oct '07: Of the 20,600 in state facilities, 173 are Pre-trial Non-state offenders/arrestees Oct '07: Of the 17,051 in local facilities, 1 is a Pre-trial Non-state offender/arrestee Nov '07: Of the 20,632 in state facilities, 217 are Pre-trial Non-state offenders/arrestees Nov '07: Of the 17,000 in local facilities, 1 is a Pre-trial Non-state offender/arrestee Dec '07: Of the 20,461 in state facilities, 198 are Pre-trial Non-state offenders/arrestees Dec '07: Of the 17,034 in local facilities, 1 is a Pre-trial Non-state offender/arrestee Jan '08: Of the 20,507 in state facilities, 199 are physically located in Bureau of Prisons in Florida Jan '08: Of the 17,060 in local facilities, 1 is a Pre-trial Non-state offenders/arrestees Feb '08: Of the 20,575 in state facilities, 200 are Pre-trial Non-state offenders/arrestees Feb '08: Of the 17,024 in local facilities, 1 is a Pre-trial Non-state offenders/arrestees Mar '08: Of the 20,537 in state facilities, 144 are Pre-trial Non-state offenders/arrestees Mar '08: As of this month, local facilities are no longer housing Pre-trial Non-state offenders/arrestees Apr '08: Of the 20,671 in state facilities, 200 are Pre-trial Non-state offenders/arrestees May '08: Of the 20,644 in state facilities, 152 are Pre-trial Non-state offenders/arrestees June '08: Of the 20,622 in state facilities, 307 are Pre-trial Non-state offenders/arrestees July '08: Of the 20,782 in state facilities, 183 are Pre-trial Non-state offenders/arrestees
	FEB	20577	15942		36519	38	0.10%	
	MAR	20596	16066		36662	143	0.39%	
	APR	20795	16093		36888	226	0.62%	
	MAY	20772	16097		36869	-19	-0.05%	
	JUN	20,869	16121		36990	121	0.33%	
	JUL	20790	16,335		37125	135	0.36%	
	AUG	20750	16625		37375	250	0.67%	
	SEP	20700	16665		37365	-10	-0.03%	
	OCT	20600	17051		37651	286	0.77%	
	NOV	20632	17000		37632	-19	-0.05%	
	DEC	20461	17035		37496	-136	-0.36%	
2008	JAN	20507	17060		37567	71	0.19%	Mar '08: Of the 20,596 in state facilities, 178 are Pre-trial Non-state offenders/arrestees Mar '08: Of the 16,066 in local facilities, 13 are Pre-trial Non-state offenders/arrestees Apr '08: Of the 20,795 in state facilities, 231 are Pre-trial Non-state offenders/arrestees Apr '08: Of the 16,093 in local facilities, 1 is a Pre-trial Non-state offender/arrestee May '08: Of the 20,772 in state facilities, 217 are Pre-trial Non-state offenders/arrestees May '08: Of the 16,097 in local facilities, 1 is a Pre-trial Non-state offender/arrestee June '08: Of the 20,869 in state facilities, 203 are Pre-trial Non-state offenders/arrestees June '08: Of the 16,121 in local facilities, 1 is a Pre-trial Non-state offender/arrestee July '08: Of the 20,790 in state facilities, 214 are Pre-trial Non-state offenders/arrestees July '08: Of the 16,335 in local facilities, 1 is a Pre-trial Non-state offender/arrestee Aug '08: Of the 20,750 in state facilities, 181 are Pre-trial Non-state offenders/arrestees Aug '08: Of the 16,625 in local facilities, 1 is a Pre-trial Non-state offender/arrestee Sep '08: Of the 20,750 in state facilities, 181 are Pre-trial Non-state offenders/arrestees Sep '08: Of the 16,625 in local facilities, 1 is a Pre-trial Non-state offender/arrestee Oct '08: Of the 20,600 in state facilities, 173 are Pre-trial Non-state offenders/arrestees Oct '08: Of the 17,051 in local facilities, 1 is a Pre-trial Non-state offender/arrestee Nov '08: Of the 20,632 in state facilities, 217 are Pre-trial Non-state offenders/arrestees Nov '08: Of the 17,000 in local facilities, 1 is a Pre-trial Non-state offender/arrestee Dec '08: Of the 20,461 in state facilities, 198 are Pre-trial Non-state offenders/arrestees Dec '08: Of the 17,034 in local facilities, 1 is a Pre-trial Non-state offender/arrestee Jan '09: Of the 20,507 in state facilities, 199 are physically located in Bureau of Prisons in Florida Jan '09: Of the 17,060 in local facilities, 1 is a Pre-trial Non-state offenders/arrestees Feb '09: Of the 20,575 in state facilities, 200 are Pre-trial Non-state offenders/arrestees Feb '09: Of the 17,024 in local facilities, 1 is a Pre-trial Non-state offenders/arrestees Mar '09: Of the 20,537 in state facilities, 144 are Pre-trial Non-state offenders/arrestees Mar '09: As of this month, local facilities are no longer housing Pre-trial Non-state offenders/arrestees Apr '09: Of the 20,671 in state facilities, 200 are Pre-trial Non-state offenders/arrestees May '09: Of the 20,644 in state facilities, 152 are Pre-trial Non-state offenders/arrestees June '09: Of the 20,622 in state facilities, 307 are Pre-trial Non-state offenders/arrestees July '09: Of the 20,782 in state facilities, 183 are Pre-trial Non-state offenders/arrestees
	FEB	20575	17024		37599	32	0.09%	
	MAR	20537	17360		37897	298	0.79%	
	APR	20671	17168		37839	-58	-0.15%	
	MAY	20644	17322		37966	127	0.34%	
	JUN	20929	17347		38276	310	0.82%	
	JUL	20782	17,455		38237	-39	-0.10%	
	AUG	20887	17716		38603	366	0.96%	
	SEP	21673	17493		39166	563	1.46%	
	OCT	21199	17604		38803	-363	-0.93%	
	NOV	20997	17559		38556	-247	-0.64%	
	DEC	20857	17371		38228	-328	-0.85%	

YEAR		STATE FACILITIES	LOCAL FACILITIES	CONTRACT TWP	TOTAL CUSTODY POPULATION			Cause of Significant Change
2009	JAN	19698	17565	1111*	38374	38374	#DIV/0!	Aug '08: Of the 20,887 in state facilities, 193 are Pre-trial Non-state offenders/arrestees
	FEB	19802	17683	1110	38595	221	0.58%	Sept '08: Of the 21,673 in state facilities, 1,199 are Pre-trial Non-state offenders/arrestees
	MAR	19868	17988	1123	38979	384	0.99%	Oct. '08: Of the 21,199 in state facilities, 618 are Pre-trial Non-state offenders/arrestees
	APR	19266	18298	1161	38725	-254	-0.65%	Nov. '08: Of the 20,997 in state facilities, 615 are Pre-trial Non-state offenders/arrestees
	MAY	19252	18533	1129	38914	189	0.49%	Dec. '08: Of the 20,857 in state facilities, 577 are Pre-trial Non-state offenders/arrestees
	JUN	19301	18420	1065	38786	-128	-0.33%	Ending of George Washington University Projections
	JUL	19187	18723	1099	39009	223	0.57%	
	AUG	19003	19350	1091	39444	435	1.12%	
	SEP	19013	19634	1079	39726	282	0.71%	
	OCT	19003	19923	1038	39964	238	0.60%	
	NOV	19024	19869	1034	39927	-37	-0.09%	
	DEC	18896	19891	993	39780	-147	-0.37%	
2010	JAN	18774	20059	994	39827	47	0.12%	
	FEB	18697	20207	981	39885	58	0.15%	
	MAR	18868	20201	1007	40076	191	0.48%	
	APR	18928	20044	1016	39988	-88	-0.22%	
	MAY	18863	20122	995	39980	-8	-0.02%	
	JUN	18963	19827	1032	39822	-158	-0.40%	
	JUL	18973	19651	1055	39679	-143	-0.36%	
	AUG	18944	19865	1104	39913	234	0.59%	
	SEP	19103	19964	1126	40193	280	0.70%	
	OCT	19041	19675	1118	39834	-359	-0.89%	
	NOV	19070	19410	1138	39618	-216	-0.54%	
	DEC	19008	19287	1096	39391	-227	-0.57%	
2011	JAN	18983	19373	1120	39476	85	0.22%	
	FEB	18978	19460	1150	39588	112	0.28%	
	MAR	18896	19759	997	39652	64	0.16%	
	APR	18628	20016	1023	39667	15	0.04%	
	MAY	18137	20641	988	39766	99	0.25%	May '11: Threat of the flooding of the Mississippi River occurred on 5/9/11, LSP offenders were evacuated to other state facilities, therefore intakes from parish prisons were suspended for 7 weeks.
	JUN	17980	20709	994	39683	-83	-0.21%	
	JUL	18269	20335	1006	39610	-73	-0.18%	
	AUG	18690	20169	982	39841	231	0.58%	
	SEP	18779	20296	1004	40079	238	0.60%	
	OCT	18786	20334	1005	40125	46	0.11%	
	NOV	18843	20299	999	40141	16	0.04%	
	DEC	18843	19892	974	39709	-432	-1.08%	
2012	JAN	18825	20014	989	39828	119	0.30%	
	FEB	18818	20314	976	40108	280	0.70%	
	MAR	18765	20684	971	40420	312	0.78%	
	APR	18732	20630	959	40321	-99	-0.24%	
	MAY	18561	20988	989	40538	217	0.54%	
	JUN	18236	21230	994	40460	-78	-0.19%	
	JUL	18124	21257	1005	40386	-74	-0.18%	
	AUG	18236	21063	976	40275	-111	-0.27%	
	SEP	18271	21289	1008	40568	293	0.73%	
	OCT	18194	21317	1008	40519	-49	-0.12%	
	NOV	18216	21256	979	40451	-68	-0.17%	
	DEC	18599	20624	947	40170	-281	-0.69%	

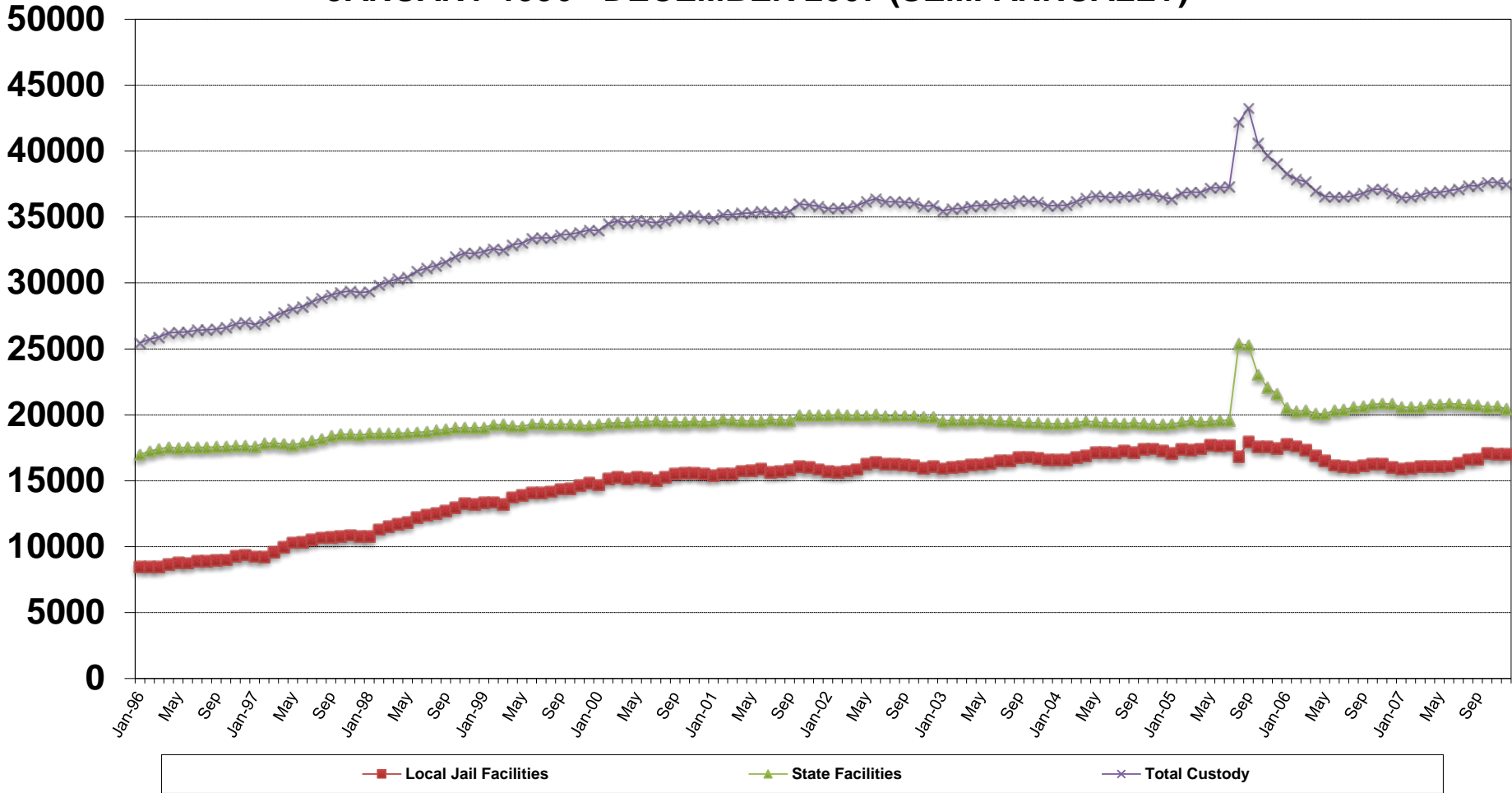
YEAR		STATE FACILITIES	LOCAL FACILITIES	CONTRACT TWP	TOTAL CUSTODY POPULATION			Cause of Significant Change
2013	JAN	18611	20466	962	40039	-131	-0.33%	
	FEB	18687	20446	963	40096	57	0.14%	
	MAR	18671	20413	941	40025	-71	-0.18%	
	APR	18666	20305	959	39930	-95	-0.24%	
	MAY	18604	20409	928	39941	11	0.03%	
	JUN	18703	20315	908	39926	-15	-0.04%	
	JUL	18870	19860	913	39643	-283	-0.71%	
	AUG	18828	19854	977	39659	16	0.04%	
	SEP	18894	19867	995	39756	97	0.24%	
	OCT	18837	19833	1022	39692	-64	-0.16%	
	NOV	18842	19693	1017	39552	-140	-0.35%	
	DEC	18913	19393	993	39299	-253	-0.64%	
2014	JAN	18923	19292	964	39179	39179	#DIV/0!	
	FEB	18992	19431	955	39378	199	0.51%	
	MAR	18802	19499	977	39278	-100	-0.25%	
	APR	18757	19429	957	39143	-135	-0.34%	
	MAY	18753	19531	950	39234	91	0.23%	
	JUN	18763	19366	933	39062	-172	-0.44%	
	JUL	18787	19301	935	39023	-39	-0.10%	
	AUG	18774	19475	963	39212	189	0.48%	
	SEP	18778	19491	942	39211	-1	0.00%	
	OCT	18853	19128	941	38922	-289	-0.74%	
	NOV	18900	18911	926	38737	-185	-0.48%	
	DEC	18787	18308	935	38030	-707	-1.83%	
2015	JAN	18767	18027	945	37739	-291	-0.77%	
	FEB	18611	17874	988	37473	-266	-0.70%	
	MAR	18601	18050	1000	37651	178	0.48%	
	APR	18247	18169	1036	37452	-199	-0.53%	
	MAY	18296	18086	1019	37401	-51	-0.14%	
	JUN	18256	18011	1033	37300	-101	-0.27%	
	JUL	18091	17794	1054	36939	-361	-0.97%	
	AUG	18093	17758	1059	36910	-29	-0.08%	
	SEP	18157	17653	1064	36874	-36	-0.10%	
	OCT	18321	17594	957	36872	-2	-0.01%	
	NOV	18425	17069	1101	36595	-277	-0.75%	
	DEC	18430	16877	1070	36377	-218	-0.60%	
2016	JAN	18,496	16973	1064	36533	156	0.43%	
	FEB	18,474	16977	1053	36504	-29	-0.08%	
	MAR	18,542	16872	1049	36463	-41	-0.11%	
	APR	18,622	16605	1027	36254	-209	-0.57%	
	MAY	18,567	16769	1054	36390	136	0.38%	
	JUN	18,612	16646	1022	36280	-110	-0.30%	
	JUL	15,314	19743	1065	36122	-158	-0.44%	Jul '16- ALC and WNC classed as local facilities
	AUG	14,230	20631	1034	35895	-227	-0.63%	Aug '16- Flooding caused evacuation of LCIW
	SEP	14,988	20238	969	36195	300	0.84%	
	OCT	15,095	20220	1020	36335	140	0.39%	
	NOV	15,174	19875	1008	36057	-278	-0.77%	
	DEC	15,162	19504	1016	35682	-375	-1.04%	

YEAR		STATE FACILITIES	LOCAL FACILITIES	CONTRACT TWP	TOTAL CUSTODY POPULATION	#VALUE!	#VALUE!	Cause of Significant Change
2017	JAN	15,191	19,549	962	35702			
	FEB	15,098	19,320	1120	35538	-164	-0.46%	
	MAR	14,926	19,690	1152	35768	230	0.65%	
	APR	14,893	19,639	1168	35700	-68	-0.19%	
	MAY	14,868	19,819	1119	35806	106	0.30%	
	JUN	14,933	19,542	1107	35582	-224	-0.63%	
	JUL	14,882	19,540	1085	35507	-75	-0.21%	
	AUG	14,869	19,034	1079	34982	-525	-1.48%	Sept '17 ALC became a state facility
	SEP	15,725	18,211	1065	35001	19	0.05%	
	OCT	15,579	19,235	1010	35824	823	2.35%	
	NOV	15,188	17,819	1012	34019	-1805	-5.04%	
	DEC	15,152	17,594	993	33739	-280	-0.82%	
2018	JAN	15,210	17,339	944	33493	-246	-0.73%	
	FEB	15,218	17,256	976	33450	-43	-0.13%	
	MAR	15,219	17,055	995	33269	-181	-0.54%	
	APR	15,107	17,281	1029	33417	148	0.44%	
	MAY	15,097	17,262	1000	33359	-58	-0.17%	
	JUN	15,072	17,191	923	33186	-173	-0.52%	
	JUL	14,928	16,789	931	32648	-538	-1.62%	
	AUG	14,992	16,778	914	32684	36	0.11%	
	SEP	14,980	16,730	902	32612	-72	-0.22%	
	OCT	14,981	16,683	969	32633	21	0.06%	
	NOV	14,936	16,513	1001	32450	-183	-0.56%	
	DEC	14,880	16,543	974	32397	-53	-0.16%	
2019	JAN	14,794	16,252	1,000	32046	80	0.20%	
	FEB	14,930	16,160	972	32062	16	0.05%	
	MAR	14,904	16,098	948	31950	-112	-0.35%	
	APR	14,955	15,700	886	31541	-409	-1.28%	
	MAY	14,938	16,102	867	31907	366	1.16%	
	JUN	15,015	15,873	868	31756	-151	-0.47%	**Actual data depicted to this point
	JUL	15,565	18,512	1,000	34,077	2,321	7.31%	Projected figures start
	AUG	15,565	18,562	1,000	34,127	50	0.15%	
	SEP	15,565	18,626	1,000	34,191	64	0.19%	
	OCT	15,565	18,674	1,000	34,239	48	0.14%	
	NOV	15,565	18,697	1,000	34,262	22	0.06%	
	DEC	15,565	18,708	1,000	34,273	12	0.03%	
2020	JAN	15,565	18,606	1,000	34,171	-102	-0.30%	
	FEB	15,565	18,610	1,000	34,175	3	0.01%	
	MAR	15,565	18,614	1,000	34,179	4	0.01%	
	APR	15,565	18,622	1,000	34,187	9	0.03%	
	MAY	15,565	18,617	1,000	34,182	-5	-0.02%	
	JUN	15,565	18,657	1,000	34,222	40	0.12%	
	JUL	15,565	18,592	1,000	34,157	-65	-0.19%	
	AUG	15,565	18,580	1,000	34,145	-12	-0.04%	
	SEP	15,565	18,562	1,000	34,127	-18	-0.05%	
	OCT	15,565	18,566	1,000	34,131	4	0.01%	
	NOV	15,565	18,557	1,000	34,122	-9	-0.03%	
	DEC	15,565	18,550	1,000	34,115	-6	-0.02%	

YEAR		STATE FACILITIES	LOCAL FACILITIES	CONTRACT TWP	TOTAL CUSTODY POPULATION		Cause of Significant Change
2021	JAN	15,565	18,463	1,000	34,028	-87	-0.26%
	FEB	15,565	18,445	1,000	34,010	-18	-0.05%
	MAR	15,565	18,415	1,000	33,980	-29	-0.09%
	APR	15,565	18,393	1,000	33,958	-22	-0.06%
	MAY	15,565	18,377	1,000	33,942	-16	-0.05%
	JUN	15,565	18,337	1,000	33,902	-40	-0.12%
	JUL	15,565	18,266	1,000	33,831	-71	-0.21%
	AUG	15,565	18,264	1,000	33,829	-2	-0.01%
	SEP	15,565	18,245	1,000	33,810	-19	-0.06%
	OCT	15,565	18,239	1,000	33,804	-6	-0.02%
	NOV	15,565	18,254	1,000	33,819	14	0.04%
	DEC	15,565	18,247	1,000	33,812	-7	-0.02%
2022	JAN	15,565	18,140	1,000	33,705	-107	-0.32%
	FEB	15,565	18,130	1,000	33,695	-10	-0.03%
	MAR	15,565	18,100	1,000	33,665	-30	-0.09%
	APR	15,565	18,070	1,000	33,635	-30	-0.09%
	MAY	15,565	18,035	1,000	33,600	-35	-0.10%
	JUN	15,565	18,021	1,000	33,586	-14	-0.04%
	JUL	15,565	17,909	1,000	33,474	-112	-0.33%
	AUG	15,565	17,918	1,000	33,483	9	0.03%
	SEP	15,565	17,895	1,000	33,460	-23	-0.07%
	OCT	15,565	17,887	1,000	33,452	-8	-0.02%
	NOV	15,565	17,883	1,000	33,448	-5	-0.01%
	DEC	15,565	17,872	1,000	33,437	-11	-0.03%
2023	JAN	15,565	17,869	1,000	33,434	-3	-0.01%
	FEB	15,565	17,856	1,000	33,421	-13	-0.04%
	MAR	15,565	17,840	1,000	33,405	-16	-0.05%
	APR	15,565	17,838	1,000	33,403	-2	-0.01%
	MAY	15,565	17,828	1,000	33,393	-9	-0.03%
	JUN	15,565	17,803	1,000	33,368	-26	-0.08%
	JUL	15,565	17,813	1,000	33,378	11	0.03%
	AUG	15,565	17,808	1,000	33,373	-6	-0.02%
	SEP	15,565	17,782	1,000	33,347	-26	-0.08%
	OCT	15,565	17,775	1,000	33,340	-7	-0.02%
	NOV	15,565	17,757	1,000	33,322	-18	-0.06%
	DEC	15,565	17,728	1,000	33,293	-28	-0.08%

DEPARTMENT OF PUBLIC SAFETY AND CORRECTIONS POPULATION TRENDS JANUARY 1996 - DECEMBER 2007 (SEMI-ANNUALLY)

Offenders

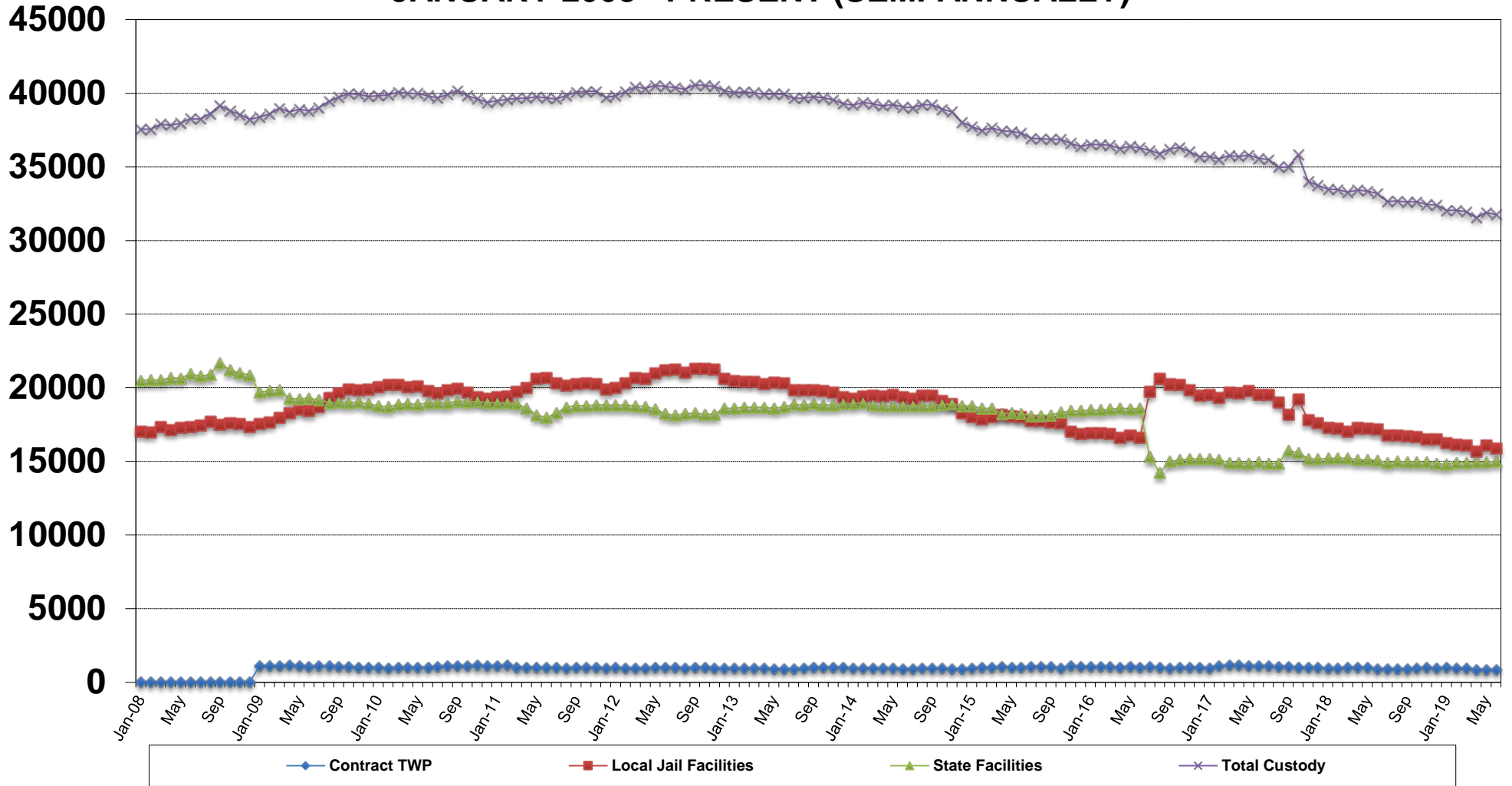


8/29/05 Hurricane Katrina occurred and Hurricane Rita occurred on 9/24/05, therefore parish jail evacuees were taken into DOC population.

* Effective 10/26/01 current state offender populations based on operational capacity from Current State Offender Populations: Projected Expansions document plus the number of evacuees located in state institutions and parish jai

DEPARTMENT OF PUBLIC SAFETY AND CORRECTIONS POPULATION TRENDS JANUARY 2008 - PRESENT (SEMI-ANNUALLY)

Offenders



09/01/17 Allen Correctional Center became a state facility.

07/01/16 Allen Correctional Center and Winn Correctional Center became classified as local facilities.

05/09/11 Threat of the flooding of the Mississippi River occurred, LSP offenders were evacuated to other state facilities, therefore intakes from parish prisons were suspended for 7 weeks.

09/01/08 Hurricane Gustav occurred, therefore parish jail evacuees were taken into DOC population.

DATE: 6/26/2019
DEPARTMENT OF PUBLIC SAFETY AND CORRECTIONS
WEEKLY VACANCY AND RELEASE REPORT

INSTITUTIONS	OPERATIONAL CAPACITY	ASSIGNED	PHYSICALLY PRESENT	NON DOC/ PARISH HOLDS	CURRENT VACANCIES	PROJECTED RELEASES
WARDEN'S REGION 1						
DWCC *1	1174	1174	1173	0	0	3
PROTECTION (WCC)	50	50	50	0	0	0
SUBTOTAL DWCC	1224	1224	1223	0	0	3
DCI	1378	1417	1414	2	-41	2
Youthful Offender	40	12	12	0	28	0
UNIT 3	242	215	215	0	27	0
UNIT 4	140	125	125	0	15	0
SUBTOTAL DCI	1800	1769	1766	2	29	2
EHCC - GEN. POP.	1510	1533	1525	0	-23	4
SKILLED NURSING UNIT *4	54	50	50	0	4	0
HRDC	411	387	377	6	18	4
SUBTOTAL HCC	1975	1970	1952	6	-1	8
LSP	5684	5355	5342	4	325	4
NURSING UNIT 2	34	31	31	0	3	0
LSP/LCIW	5	5	5	1	-1	0
DEATH ROW	90	69	69	0	21	0
SUBTOTAL LSP	5813	5460	5447	5	348	4
REGION 1 TOTAL	10812	10423	10388	13	376	17
WARDEN'S REGION 2						
RLCC	1443	1538	1531	0	-95	4
LRDC	250	237	234	0	13	0
JLDCC	115	15	15	0	100	0
SUBTOTAL RLCC	1808	1790	1780	0	18	4
LCIW - GEN. POP. *7,8	0	0	0	0	0	0
FRDC *8	0	0	0	0	0	0
DEATH ROW *8	4	0	0	0	4	0
LCIW/EHCC	296	241	234	0	55	2
LCIW/JETSON	304	281	269	0	23	1
SUBTOTAL LCIW	604	522	503	0	82	3
RCC *6	1314	1308	1296	0	6	6
STATE POLICE	155	143	143	0	12	0
ALC	872	829	826	0	43	2
WNC *10	1576	149	149	0	1427	0
REGION 2 TOTAL	6329	4741	4697	0	1588	15
TOTAL INSTITUTION *10	15565	15015	14936	13	537	32
TOTAL WNC	1576	149	149	0	1427	0
TOTAL	17141	15164	15085	13	1964	32
CONTRACT TWP						
CEDARWOOD MANOR	100	68	68	0	32	1
COF/MON-MEN	162	80	80	0	82	0
EFL TWP	75	66	66	0	9	2
LAFOURCHE TWP	174	121	121	0	53	0
WFL TWP	60	57	57	0	3	0
RAPIDES TWP *2	200	78	78	0	122	2
SOUTHWEST TWP	350	266	266	0	84	4
WBR TWP *3	185	132	132	0	53	2
TOTAL CONTRACT TWP *5	1306	868	868	0	438	11
GRAND TOTAL	18447	16032	15953	13	2402	43

*1 Includes 0 WRDC.

*2 RAP TWP Co-op agreement is for 245.

*3 WBR TWP Co-op agreement is for 185.

*4 Rated capacity is 64

*5 Totals are included on the CFACILITY report

*6 Physically present includes 0 intensive incarceration offenders

*7 Physically present includes 0 intensive incarceration offenders

*8 Currently empty due to evacuation because of flooding.

*9 There are 26 Orleans non DOC offenders in the HSU dorm not included in Hunt totals

*10 WNC is not included in the Total Institution counts